



BRAȘOV / Brașov-Ghimbav (LRBV)

1. Landing Charge

UNIT RATE: 3.20 EURO / tonne

2. Lighting charge

UNIT RATE: 1.80 EURO / tonne

3. Parking charge

UNIT RATE: 0.10 EURO / tonne / hour

4. Passengers service

UNIT RATE: 3.50 EURO / passenger

SECURITY CHARGE: 0.55 EURO / passenger

5. Other charges

NIL

6. Exemptions

NIL

7. Reductions

NIL

**LRBV AD 2.1 AERODROME LOCATION INDICATOR AND NAME**
LRBV - BRAȘOV / Brașov-Ghimbav**LRBV AD 2.2 AERODROME GEOGRAPHICAL AND ADMINISTRATIVE DATA**

1	ARP coordinates and site at AD	454222N 0253124E Runway centre.
2	Direction and distance from city	8.5 KM North west from Brașov.
3	Elevation/Reference temperature/mean low temperature	1764 FT / 7.8°C/ -11.3°C
4	Geoid undulation at AD ELEV PSN	127 FT
5	MAG VAR/ Annual rate of change	6°E (2022) / 7.2'E
6	AD Administration, address, telephone, telefax, telex, AFS	R.A. "Aeroportul Internațional Brașov-Ghimbav" Str. Herman Oberth,nr. 35, oraș Ghimbav, jud. Brașov Tel: +40-(268)-410.777 int 212 Fax: +40-(268)-475.576 E-mail: aeroportbv@cjabrasov.ro Web: https://site.judbrasov.ro
7	Types of traffic permitted (IFR/VFR)	IFR/VFR
8	Remarks	NIL

LRBV AD 2.3 OPERATIONAL HOURS

1	AD Operator	W:0500-1700; S:0400-1600
2	Customs and immigration	W:0500-1700; S:0400-1600
3	Health and sanitation	W:0500-1700; S:0400-1600
4	AIS Briefing Office	W:0500-1700; S:0400-1600, see GEN 3.1-5
5	ATS Reporting Office (ARO)	W:0500-1700; S:0400-1600, see ENR 1.10-2
6	MET Briefing Office	As AD Operator
7	ATS	As AD Operator
8	Fuelling	W:0500-1700; S:0400-1600
9	Handling	W:0500-1700; S:0400-1600
10	Security	W:0500-1700; S:0400-1600
11	De-icing	W:0500-1700; S:0400-1600
12	Remarks	Outside the operational hours services are available O/R, submitted to the AD not later than 24 hours in advance. For flights outside aerodrome operational hours flight plans shall be submitted via website: http://flightplan.romatsa.ro . See ENR 1.10-3 for details. Preflight Information Bulletins will be provided via email for each flight.

LRBV AD 2.4 HANDLING SERVICES AND FACILITIES

1	Cargo-handling facilities	2 electric tractor, 7 dollies, 2 GPU 90KVA, 1 towed potable water service (electric), 1 towed lavatory water service (electric), 1 self – propelled conveyor belt vehicle, 2 towed passenger stair, 1 pushback tractor with TOW BAR 100 tones, 1 ULD
2	Fuel/Oil types	JET A1/NIL AVGAZ 100LL/NIL
3	Fuelling facilities/capacity	45000 Liters
4	De-icing facilities	1 deicing equipment Typhoon
5	Hangar space for visiting aircraft	NIL
6	Repair facilities for visiting aircraft	NIL
7	Remarks	NIL

LRBV AD 2.5 PASSENGER FACILITIES

1	Hotels	In the city.
2	Restaurants	In the city
3	Transportation	Taxis from the AD
4	Medical facilities	Hospitals in the city
5	Bank and Post Office	Banks and post Office in the city; ATM inside Passengers Terminal
6	Tourist Office	In the city
7	Remarks	NIL

LRBV AD 2.6 RESCUE AND FIRE FIGHTING SERVICES

1	AD category for fire fighting	CAT 7
2	Rescue equipment	Holmatro extrication tools, Webber hidraulic extrication tools.
3	Capability for removal of disabled aircraft	NIL
4	Remarks	NIL



LRBV AD 2.7 RUNWAY SURFACE CONDITION ASSESSMENT AND REPORTING, AND SNOW PLAN

1	Types of clearing equipment	2 snow ploughs with brush and blower
2	Clearance priorities	1. RWY 03/21 2. TWY 3. APRON
3	Use of material for movement area surface treatment	Runway deicing liquid used for RWY, TWYs and Apron de-icing is based on potassium acetate fluid KAC.
4	Specially prepared winter runways	NIL
5	Remarks	NIL

LRBV AD 2.8 APRONS, TAXIWAYS AND CHECK LOCATIONS DATA

1	Apron designation, surface and strength	Designation: APRON Surface: Concrete Strength: 104/R/C/W/T
2	Taxiway designation, width, surface and strength	Designation: TWY A Width: 23m Surface: Concrete Strength: 124/R/C/W/T
3	ACL location and elevation	At APRON
4	VOR checkpoints	NIL
5	INS checkpoints	INS1: 454140.35N 0253058.29E INS2: 454141.41N 0253059.39E INS3: 454142.47N 0253100.50E
6	Remarks	NIL

LRBV AD 2.9 SURFACE MOVEMENT GUIDANCE AND CONTROL SYSTEM AND MARKINGS

1	Use of aircraft stand ID signs, TWY guide lines and visual docking/parking guidance system at aircraft stands	Aircraft stand ID signs: NIL TWY guide lines: Provided for TWY A Visual docking guidance system of aircraft stands: NIL Visual parking guidance system of aircraft stands: aircraft stand markings
2	RWY and TWY markings and LGT	RWY: - markings: designation, THR, TDZ, aiming point, centre line, edge lines. - lights: THR, centre line, TDZ, edge, END. TWY A: - markings: centre line, enhanced centre line, edge lines, holding position, mandatory instructions markings, information markings. - lights: centre line, edge, guard lights.
3	Stop bars and runway guard lights	TWY A: Stop bars and runway guard lights at holding position
4	Other RWY protection measure	Mandatory instruction signs on TWY A
5	Remarks	RWY 03 turn pad - markings: centre line, edge line. - lights: centre line, edge.

LRBV AD 2.10 AERODROME OBSTACLES

In Area 2

OBST ID/ Designation	OBST type	OBST position	ELEV/HGT	Markings/ Type, colour	Remarks
a	b	c	d	e	f
2 LRBV	ANTENNA	453948.3N 0253025.4E	1885/51 FT	NIL	NIL
7 LRBV	ANTENNA	454141.2N 0253205.3E	1826/79 FT	NIL	
9 LRBV	ANTENNA	453708.8N 0252842.3E	2059/96 FT	Marked/ LGTD R	
12 LRBV	LIGHT	454138.4N 0253150.0E	1830/80 FT	LGTD R	
17 LRBV	BUILDING	453812.3N 0252519.3E	2040/90 FT	NIL	
18 LRBV	BUILDING	453759.8N 0252515.9E	2094/134 FT	NIL	
19 LRBV	BUILDING	454142.9N 0252621.6E	2004/77 FT	NIL	
24 LRBV	BUILDING	454158.4N 0252647.3E	2024/194 FT	NIL	
25 LRBV	BUILDING	453948.5N 0253020.1E	1953/119 FT	NIL	
26 LRBV	CHURCH	453939.2N 0253024.7E	1900/62 FT	NIL	
27 LRBV	CHURCH	453934.8N 0253029.3E	1928/90 FT	NIL	
29 LRBV	CHURCH	453731.1N 0252906.1E	2075/137 FT	NIL	
30 LRBV	CHURCH	453748.5N 0252905.9E	2011/80 FT	NIL	
31 LRBV	CHURCH	453732.2N 0252848.7E	2135/187 FT	NIL	
38 LRBV	CHURCH	453827.1N 0253515.9E	2148/220 FT	NIL	
39 LRBV	CHURCH	453752.6N 0253430.9E	2200/126 FT	NIL	
40 LRBV	CHURCH	453808.3N 0253452.9E	2151/146 FT	NIL	
41 LRBV	WATER TOWER	454028.3N 0253026.7E	1860/52 FT	NIL	



a	b	c	d	e	f
42	LRBV	WATER TOWER	454125.6N 0252721.7E	1927/115 FT	NIL
45	LRBV	WATER TOWER	453953.6N 0253022.7E	1950/123 FT	Marked/ LGTD R
46	LRBV	WATER TOWER	454001.2N 0253045.0E	1934/112 FT	NIL
47	LRBV	WATER TOWER	454002.3N 0253053.8E	1946/125 FT	LGTD R
50	LRBV	BUILDING	453919.9N 0252953.0E	1923/63 FT	NIL
61	LRBV	BUILDING	453816.8N 0252501.7E	2028/54 FT	NIL
62	LRBV	BUILDING	453759.8N 0252514.2E	2022/62 FT	NIL
63	LRBV	BUILDING	453757.0N 0252508.9E	2020/57 FT	NIL
67	LRBV	BUILDING	453911.1N 0252545.5E	1988/77 FT	NIL
69	LRBV	BUILDING	454056.6N 0252701.5E	1889/55 FT	NIL
116	LRBV	BUILDING	453951.4N 0253015.2E	1887/52 FT	NIL
117	LRBV	BUILDING	454002.2N 0253027.7E	1908/82 FT	NIL
123	LRBV	BUILDING	453947.5N 0253033.0E	1896/62 FT	NIL
126	LRBV	BUILDING	453945.2N 0253043.5E	1898/65 FT	NIL
138	LRBV	BUILDING	453957.3N 0253048.9E	1896/71 FT	NIL
139	LRBV	BUILDING	454005.4N 0253041.4E	1880/59 FT	NIL
149	LRBV	BUILDING	454138.6N 0253150.2E	1827/77 FT	LGTD R
152	LRBV	BUILDING	454006.4N 0253020.4E	1884/61 FT	NIL
153	LRBV	BUILDING	453745.0N 0252913.9E	1992/63 FT	NIL
154	LRBV	BUILDING	453844.9N 0252940.5E	1936/54 FT	NIL
170	LRBV	BUILDING	453842.8N 0253458.8E	2345/88 FT	NIL
171	LRBV	BUILDING	453842.1N 0253443.5E	2359/72 FT	NIL
172	LRBV	BUILDING	453843.8N 0253441.5E	2373/55 FT	NIL
174	LRBV	BUILDING	453857.7N 0253531.1E	2191/89 FT	NIL
175	LRBV	BUILDING	453819.4N 0253348.5E	2595/91 FT	NIL
200	LRBV	CHIMNEY	454149.3N 0252721.8E	1912/114 FT	NIL
202	LRBV	CHIMNEY	454217.5N 0252632.7E	1998/101 FT	LGTD R
203	LRBV	CHIMNEY	454003.2N 0253041.8E	1904/84 FT	NIL
204	LRBV	CHIMNEY	454013.2N 0253020.1E	1906/90 FT	NIL
205	LRBV	CHIMNEY	454019.9N 0253018.8E	1880/67 FT	NIL
206	LRBV	CHIMNEY	454020.0N 0253018.0E	1868/56 FT	NIL
208	LRBV	CHIMNEY	453902.0N 0253448.7E	2075/89 FT	NIL
211	LRBV	ANTENNA	453838.1N 0252441.1E	2226/101 FT	NIL
212	LRBV	ANTENNA	453857.1N 0252451.7E	2309/101 FT	NIL
213	LRBV	ANTENNA	454140.5N 0252628.7E	2032/103 FT	Marked/ LGTD R
214	LRBV	ANTENNA	454141.9N 0252629.5E	1984/70 FT	Marked/ LGTD R
215	LRBV	ANTENNA	454143.0N 0252626.7E	2048/108 FT	Marked/ LGTD R
217	LRBV	ANTENNA	454125.5N 0252721.7E	1945/133 FT	NIL
218	LRBV	ANTENNA	454125.7N 0252721.5E	1944/133 FT	NIL
219	LRBV	ANTENNA	454227.5N 0252729.8E	2008/217 FT	LGTD R
220	LRBV	ANTENNA	454227.4N 0252730.1E	1999/219 FT	LGTD R
221	LRBV	ANTENNA	454227.7N 0252730.2E	2002/222 FT	LGTD R
224	LRBV	ANTENNA	454209.3N 0252650.3E	1941/89 FT	NIL
225	LRBV	ANTENNA	454209.9N 0252650.7E	1953/101 FT	Marked/ LGTD R
226	LRBV	ANTENNA	454210.3N 0252651.2E	1945/93 FT	NIL
227	LRBV	ANTENNA	453958.0N 0253024.9E	1923/97 FT	Marked/ LGTD R
228	LRBV	ANTENNA	453957.0N 0253022.0E	1926/100 FT	Marked/ LGTD R
229	LRBV	ANTENNA	454001.4N 0253044.9E	1964/142 FT	NIL
230	LRBV	ANTENNA	454001.4N 0253044.8E	1950/128 FT	NIL
231	LRBV	ANTENNA	454001.3N 0253045.0E	1950/128 FT	NIL
232	LRBV	ANTENNA	454027.5N 0253117.7E	1957/161 FT	Marked
233	LRBV	ANTENNA	454005.1N 0253032.1E	1874/51 FT	NIL
234	LRBV	ANTENNA	454005.6N 0253033.6E	1881/58 FT	NIL
237	LRBV	ANTENNA	453659.3N 0252837.6E	2189/219 FT	Marked/ LGTD R
238	LRBV	ANTENNA	453825.0N 0253031.3E	2065/145 FT	Marked/ LGTD R
246	LRBV	ANTENNA	453815.9N 0253434.8E	2276/59 FT	Marked/ LGTD R
257	LRBV	POLE	454030.7N 0252909.8E	1933/113 FT	NIL
258	LRBV	POLE	454026.3N 0252923.9E	1907/113 FT	NIL
259	LRBV	POLE	454021.2N 0252937.3E	1917/97 FT	NIL
260	LRBV	POLE	454017.0N 0252951.0E	1914/95 FT	NIL
262	LRBV	POLE	454035.1N 0253016.2E	1856/54 FT	NIL
263	LRBV	POLE	454036.9N 0253009.6E	1857/45 FT	NIL
264	LRBV	POLE	454038.8N 0253002.8E	1847/45 FT	NIL
265	LRBV	POLE	454040.4N 0252956.8E	1852/45 FT	NIL
266	LRBV	POLE	454041.9N 0252951.2E	1848/45 FT	NIL
267	LRBV	POLE	454043.8N 0252944.3E	1850/45 FT	NIL
268	LRBV	POLE	454045.7N 0252937.4E	1854/45 FT	NIL
269	LRBV	POLE	454047.5N 0252931.0E	1852/45 FT	NIL
270	LRBV	POLE	454049.3N 0252924.3E	1852/45 FT	NIL
271	LRBV	POLE	454029.7N 0253024.7E	1914/105 FT	NIL

NIL



a	b	c	d	e	f
272	LRBV	POLE	454026.0N 0253014.9E	1906/91 FT	NIL
273	LRBV	POLE	454021.1N 0253001.8E	1898/89 FT	NIL
274	LRBV	POLE	454028.7N 0252850.2E	1928/107 FT	NIL
275	LRBV	POLE	454029.8N 0252855.7E	1941/120 FT	NIL
276	LRBV	POLE	454021.4N 0252834.9E	1935/106 FT	NIL
277	LRBV	POLE	454014.8N 0252819.2E	1952/116 FT	NIL
278	LRBV	POLE	454007.3N 0252804.6E	1976/128 FT	NIL
279	LRBV	POLE	453959.3N 0252750.6E	1970/118 FT	NIL
280	LRBV	POLE	453949.7N 0252741.6E	1958/98 FT	NIL
281	LRBV	POLE	453940.3N 0252731.4E	1964/97 FT	NIL
282	LRBV	POLE	453930.4N 0252720.1E	2005/128 FT	NIL
283	LRBV	POLE	453920.1N 0252709.7E	1988/101 FT	NIL
285	LRBV	POLE	453900.3N 0252650.4E	2079/108 FT	NIL
317	LRBV	POLE	453723.6N 0252613.9E	2082/101 FT	NIL
330	LRBV	POLE	453856.2N 0252709.5E	2052/161 FT	NIL
331	LRBV	POLE	453905.6N 0252722.2E	2041/163 FT	NIL
339	LRBV	POLE	453951.6N 0252817.8E	1953/100 FT	Marked
340	LRBV	POLE	453948.9N 0252826.5E	1955/100 FT	Marked
341	LRBV	POLE	453945.4N 0252837.9E	1955/100 FT	Marked
342	LRBV	POLE	453941.8N 0252849.3E	1956/101 FT	Marked
343	LRBV	POLE	453938.3N 0252900.6E	1957/101 FT	Marked
344	LRBV	POLE	453934.8N 0252911.9E	1960/101 FT	Marked
345	LRBV	POLE	453931.4N 0252921.7E	1958/101 FT	Marked
346	LRBV	POLE	453928.2N 0252931.2E	1957/101 FT	Marked
347	LRBV	POLE	453923.6N 0252941.5E	1960/101 FT	Marked
348	LRBV	POLE	453919.6N 0252950.4E	1958/101 FT	Marked
349	LRBV	POLE	453915.5N 0252959.5E	1961/100 FT	Marked
350	LRBV	POLE	453914.4N 0253002.1E	1957/95 FT	NIL
355	LRBV	POLE	453816.1N 0252540.1E	2043/101 FT	NIL
356	LRBV	POLE	453831.4N 0252535.1E	2038/100 FT	NIL
357	LRBV	POLE	453842.8N 0252522.3E	2065/100 FT	NIL
358	LRBV	POLE	453848.5N 0252521.8E	2056/102 FT	NIL
359	LRBV	POLE	453909.9N 0252537.5E	2018/103 FT	NIL
360	LRBV	POLE	453936.7N 0252556.6E	1990/101 FT	NIL
361	LRBV	POLE	453943.9N 0252559.0E	1985/99 FT	NIL
362	LRBV	POLE	454018.5N 0252620.9E	1958/101 FT	NIL
363	LRBV	POLE	454027.0N 0252616.9E	1952/100 FT	NIL
364	LRBV	POLE	454032.7N 0252619.2E	1949/102 FT	NIL
365	LRBV	POLE	454048.9N 0252658.5E	1899/62 FT	NIL
366	LRBV	POLE	454047.8N 0252659.2E	1937/100 FT	NIL
367	LRBV	POLE	454035.9N 0252658.7E	1906/64 FT	NIL
368	LRBV	POLE	454040.6N 0252653.8E	1961/120 FT	NIL
370	LRBV	POLE	454037.9N 0252642.4E	1965/119 FT	NIL
371	LRBV	POLE	454053.1N 0252701.7E	1897/63 FT	NIL
372	LRBV	POLE	454110.6N 0252713.4E	1937/117 FT	NIL
374	LRBV	POLE	454110.5N 0252716.3E	1918/99 FT	NIL
376	LRBV	POLE	454108.7N 0252715.0E	1920/101 FT	NIL
400	LRBV	POLE	454101.7N 0252838.9E	1816/54 FT	NIL
401	LRBV	POLE	454059.9N 0252845.4E	1814/54 FT	NIL
402	LRBV	POLE	454058.2N 0252851.8E	1813/54 FT	NIL
403	LRBV	POLE	454056.5N 0252858.1E	1811/54 FT	NIL
404	LRBV	POLE	454054.7N 0252904.5E	1809/54 FT	NIL
405	LRBV	POLE	454052.9N 0252911.1E	1807/54 FT	NIL
406	LRBV	POLE	454051.1N 0252917.6E	1804/54 FT	NIL
415	LRBV	POLE	453823.8N 0252537.6E	1948/100 FT	NIL
416	LRBV	POLE	453837.0N 0252528.8E	1948/100 FT	NIL
417	LRBV	POLE	453855.5N 0252527.0E	1935/102 FT	NIL
418	LRBV	POLE	453902.0N 0252531.7E	1924/103 FT	NIL
419	LRBV	POLE	453917.5N 0252543.0E	1914/103 FT	NIL
420	LRBV	POLE	453923.3N 0252547.3E	1903/102 FT	NIL
421	LRBV	POLE	453930.0N 0252551.9E	1899/101 FT	NIL
422	LRBV	POLE	453950.0N 0252602.9E	1879/100 FT	NIL
423	LRBV	POLE	453957.3N 0252607.5E	1872/100 FT	NIL
429	LRBV	POLE	454113.6N 0252723.4E	1916/98 FT	Marked
430	LRBV	POLE	454113.2N 0252723.8E	1917/99 FT	Marked
431	LRBV	POLE	454111.6N 0252721.2E	1921/102 FT	NIL
432	LRBV	POLE	454110.3N 0252720.4E	1916/98 FT	NIL
433	LRBV	POLE	454110.7N 0252719.4E	1888/69 FT	NIL
434	LRBV	POLE	454114.9N 0252730.2E	1907/97 FT	Marked
435	LRBV	POLE	454114.6N 0252730.5E	1910/99 FT	Marked

NIL



a	b	c	d	e	f
436	LRBV	POLE	454114.0N 0252734.8E	1881/71 FT	NIL
437	LRBV	POLE	454112.9N 0252735.7E	1911/97 FT	NIL
438	LRBV	POLE	454113.5N 0252755.3E	1880/70 FT	NIL
439	LRBV	POLE	454112.1N 0252808.6E	1911/100 FT	NIL
441	LRBV	POLE	454132.1N 0252824.7E	1895/100 FT	NIL
442	LRBV	POLE	454146.0N 0252839.3E	1886/101 FT	NIL
443	LRBV	POLE	454139.0N 0252832.0E	1890/100 FT	NIL
444	LRBV	POLE	454154.8N 0252838.6E	1883/100 FT	NIL
445	LRBV	POLE	454159.2N 0252827.8E	1884/100 FT	NIL
456	LRBV	POLE	454033.1N 0253053.9E	1890/93 FT	NIL
457	LRBV	POLE	454030.8N 0253039.0E	1918/117 FT	NIL
458	LRBV	POLE	454042.0N 0253107.8E	1905/117 FT	NIL
459	LRBV	POLE	454114.1N 0253200.6E	1844/84 FT	Marked
460	LRBV	POLE	454114.8N 0253201.9E	1843/83 FT	Marked
461	LRBV	POLE	454111.9N 0253201.9E	1912/149 FT	Marked
462	LRBV	POLE	454109.5N 0253149.8E	1891/128 FT	Marked
463	LRBV	POLE	454132.6N 0253151.4E	1837/85 FT	Marked
464	LRBV	POLE	454132.1N 0253150.9E	1837/84 FT	Marked
465	LRBV	POLE	454125.4N 0253155.2E	1839/86 FT	Marked
466	LRBV	POLE	454125.8N 0253156.8E	1838/86 FT	Marked
467	LRBV	POLE	454118.1N 0253158.4E	1844/86 FT	Marked
468	LRBV	POLE	454117.5N 0253157.0E	1844/86 FT	Marked
471	LRBV	POLE	454115.5N 0253221.0E	1884/131 FT	Marked
472	LRBV	POLE	453952.9N 0253044.7E	1926/98 FT	Marked
473	LRBV	POLE	453950.7N 0253048.9E	1924/98 FT	Marked
474	LRBV	POLE	453948.6N 0253051.5E	1935/112 FT	Marked
475	LRBV	POLE	453950.1N 0253052.0E	1899/76 FT	NIL
476	LRBV	POLE	453952.1N 0253057.3E	1896/76 FT	NIL
477	LRBV	POLE	453951.3N 0253058.7E	1919/100 FT	NIL
478	LRBV	POLE	454009.8N 0253113.9E	1900/91 FT	NIL
479	LRBV	POLE	454007.0N 0253110.6E	1872/59 FT	NIL
480	LRBV	POLE	454004.7N 0253104.3E	1878/61 FT	NIL
481	LRBV	POLE	454000.2N 0253059.0E	1912/91 FT	NIL
482	LRBV	POLE	453958.6N 0253058.3E	1885/63 FT	NIL
483	LRBV	POLE	453955.0N 0253108.3E	1916/96 FT	NIL
484	LRBV	POLE	453953.0N 0253114.9E	1932/109 FT	NIL
485	LRBV	POLE	453950.3N 0253123.7E	1931/112 FT	NIL
486	LRBV	POLE	453947.1N 0253134.5E	1911/98 FT	NIL
487	LRBV	POLE	453949.9N 0253144.6E	1904/97 FT	Marked
488	LRBV	POLE	453954.8N 0253152.0E	1898/96 FT	NIL
489	LRBV	POLE	453958.1N 0253157.0E	1914/115 FT	Marked
493	LRBV	POLE	454016.9N 0253159.9E	1890/103 FT	NIL
495	LRBV	POLE	454032.0N 0253159.0E	1863/84 FT	Marked
514	LRBV	LIGHTNING	453911.2N 0252545.2E	1995/84 FT	NIL
515	LRBV	LIGHTNING	453909.3N 0252544.9E	2007/96 FT	NIL
516	LRBV	LIGHTNING	454035.9N 0252644.7E	1903/57 FT	NIL
517	LRBV	LIGHTNING	454033.9N 0252643.1E	1903/57 FT	NIL
522	LRBV	LIGHTNING	453937.1N 0253006.5E	1896/52 FT	NIL
523	LRBV	LIGHTNING	453947.7N 0253033.0E	1908/74 FT	NIL
524	LRBV	LIGHTNING	453930.2N 0253021.7E	1894/50 FT	NIL
525	LRBV	LIGHTNING	453910.4N 0253005.9E	1911/52 FT	NIL
527	LRBV	LIGHTNING	454005.4N 0253041.2E	1889/69 FT	NIL
528	LRBV	LIGHTNING	454011.2N 0253104.1E	1882/77 FT	NIL
529	LRBV	LIGHTNING	454018.8N 0253058.9E	1869/64 FT	NIL
530	LRBV	LIGHTNING	454018.4N 0253104.7E	1895/89 FT	NIL
531	LRBV	LIGHTNING	454056.0N 0253050.7E	1838/54 FT	NIL
536	LRBV	LIGHTNING	454141.1N 0253205.2E	1827/80 FT	NIL
537	LRBV	LIGHTNING	454148.3N 0253139.5E	1819/68 FT	NIL
538	LRBV	LIGHTNING	453745.2N 0252913.6E	2007/77 FT	NIL
539	LRBV	LIGHTNING	453745.6N 0252914.4E	2007/78 FT	NIL
540	LRBV	LIGHTNING	453842.1N 0253443.6E	2375/88 FT	NIL
546	LRBV	ANTENNA	452537.5N 0252906.0E	8501/332 FT	NIL
550	LRBV	BUILDING	453909.5N 0252545.0E	2002/90 FT	NIL
551	LRBV	BUILDING	453910.3N 0252546.7E	1983/72 FT	NIL
556	LRBV	POLE	453945.5N 0253108.1E	1886/66 FT	NIL
561	LRBV	CONTROL TOWER	454148.3N 0253139.3E	1805/53 FT	LGTD R
562	LRBV	ANTENNA	454522.1N 0253626.9E	2450/807 FT	NIL
563	LRBV	ANTENNA	454513.3N 0253625.1E	2451/809 FT	NIL
564	LRBV	ANTENNA	454510.4N 0253630.0E	2069/425 FT	NIL
578	LRBV	ANTENNA	453757.6N 0253616.0E	2166/110 FT	NIL

NIL



a	b	c	d	e	f
579	LRBV	ANTENNA	453834.1N 0253631.4E	2417/88 FT	NIL
586	LRBV	CHURCH	454542.7N 0253242.4E	1810/148 FT	NIL
600	LRBV	CHURCH	453824.1N 0253631.8E	2187/134 FT	NIL
612	LRBV	CHIMNEY	453944.5N 0253849.1E	2778/909 FT	NIL
614	LRBV	BUILDING	454319.9N 0253218.6E	1734/33 FT	NIL
616	LRBV	BUILDING	454321.3N 0253302.3E	1744/51 FT	NIL
669	LRBV	BUILDING	454520.5N 0253540.1E	1786/137 FT	NIL
670	LRBV	BUILDING	454523.0N 0253546.9E	1798/149 FT	NIL
833	LRBV	BUILDING	453746.7N 0253553.0E	2320/144 FT	NIL
834	LRBV	BUILDING	453748.2N 0253555.7E	2310/142 FT	NIL
835	LRBV	BUILDING	453750.7N 0253558.6E	2322/140 FT	NIL
836	LRBV	BUILDING	453746.3N 0253600.4E	2206/98 FT	NIL
837	LRBV	BUILDING	453748.4N 0253601.1E	2204/105 FT	NIL
838	LRBV	BUILDING	453749.6N 0253602.3E	2199/102 FT	NIL
839	LRBV	BUILDING	453747.3N 0253559.7E	2218/115 FT	NIL
840	LRBV	BUILDING	453754.6N 0253617.7E	2156/101 FT	NIL
841	LRBV	BUILDING	453753.3N 0253617.9E	2157/97 FT	NIL
845	LRBV	BUILDING	453758.3N 0253613.2E	2182/111 FT	NIL
846	LRBV	BUILDING	453759.4N 0253614.3E	2176/106 FT	NIL
847	LRBV	BUILDING	453800.5N 0253615.3E	2178/110 FT	NIL
850	LRBV	BUILDING	453752.6N 0253613.3E	2169/109 FT	NIL
852	LRBV	BUILDING	453801.3N 0253617.8E	2162/104 FT	NIL
872	LRBV	CHIMNEY	454521.0N 0253546.8E	1812/163 FT	NIL
873	LRBV	CHIMNEY	454522.3N 0253546.0E	1802/152 FT	NIL
887	LRBV	ANTENNA	454539.5N 0253823.8E	1853/133 FT	NIL
888	LRBV	ANTENNA	454137.5N 0253406.7E	1884/165 FT	Marked
889	LRBV	ANTENNA	454148.8N 0253453.0E	1934/220 FT	Marked/ LGTD R
891	LRBV	ANTENNA	454308.7N 0253914.2E	2269/128 FT	Marked/ LGTD R
892	LRBV	ANTENNA	454529.5N 0253301.0E	1793/130 FT	Marked/ LGTD R
898	LRBV	ANTENNA	454447.0N 0252531.0E	2140/107 FT	Marked
899	LRBV	ANTENNA	454445.8N 0252528.7E	2117/90 FT	Marked/ LGTD R
902	LRBV	ANTENNA	453812.7N 0253555.7E	3223/197 FT	NIL
943	LRBV	ANTENNA	454156.4N 0253331.8E	1821/100 FT	NIL
960	LRBV	LIGHTNING	454238.3N 0253539.6E	1888/191 FT	NIL
965	LRBV	TREE	454326.8N 0253222.9E	1752/57 FT	NIL
966	LRBV	TREE	454326.5N 0253220.8E	1758/63 FT	NIL
967	LRBV	TREE	454325.7N 0253215.8E	1751/53 FT	NIL
969	LRBV	TREE	454326.5N 0253226.1E	1747/54 FT	NIL
977	LRBV	TREE	453808.2N 0253549.6E	3306/233 FT	NIL
1011	LRBV	POLE	454419.5N 0253414.9E	1764/98 FT	Marked
1013	LRBV	POLE	454419.1N 0253418.8E	1780/111 FT	NIL
1015	LRBV	POLE	454422.7N 0253420.2E	1771/103 FT	NIL
1277	LRBV	POLE	454512.9N 0253336.5E	1761/100 FT	Marked
1278	LRBV	POLE	454516.6N 0253336.8E	1771/112 FT	NIL
1288	LRBV	POLE	454526.7N 0253331.0E	1769/110 FT	NIL
1291	LRBV	POLE	454554.4N 0253326.2E	1781/129 FT	NIL
1364	LRBV	POLE	454515.2N 0253324.2E	1761/98 FT	NIL
1407	LRBV	POLE	454414.5N 0253422.2E	1760/95 FT	Marked
1414	LRBV	POLE	454413.1N 0253428.4E	1773/109 FT	NIL
1428	LRBV	POLE	454220.1N 0253339.7E	1811/106 FT	NIL
1469	LRBV	POLE	454239.9N 0253352.7E	1803/109 FT	NIL
1470	LRBV	POLE	454232.6N 0253345.0E	1810/111 FT	NIL
1473	LRBV	POLE	454143.2N 0253300.1E	1806/78 FT	Marked
1631	LRBV	BUILDING	453537.4N 0253138.1E	3175/89 FT	NIL
1632	LRBV	BUILDING	453921.7N 0252550.9E	1931/28 FT	NIL
1633	LRBV	BUILDING	454005.1N 0253306.7E	1859/87 FT	NIL
1634	LRBV	BUILDING	453754.7N 0252813.6E	2001/52 FT	NIL
1635	LRBV	POLE	453820.3N 0252919.3E	2004/49 FT	NIL
1636	LRBV	POLE	453552.8N 0252646.7E	2279/114 FT	NIL
1637	LRBV	BUILDING	454530.6N 0253322.7E	1693/31 FT	NIL
1638	LRBV	BUILDING	454136.1N 0252923.2E	1794/10 FT	NIL
1639	LRBV	BUILDING	454006.1N 0253326.9E	1845/74 FT	NIL
1640	LRBV	BUILDING	454021.4N 0253536.2E	1813/32 FT	NIL
1641	LRBV	BUILDING	453947.5N 0253140.7E	1910/115 FT	NIL
1642	LRBV	BUILDING	454052.5N 0253751.2E	1871/59 FT	NIL
1643	LRBV	BUILDING	454000.2N 0253350.3E	1861/98 FT	NIL
1644	LRBV	BUILDING	454103.7N 0253105.0E	1892/100 FT	NIL
1645	LRBV	BUILDING	453809.9N 0252741.1E	2012/66 FT	NIL
1647	LRBV	BUILDING	453806.2N 0253815.9E	2112/131 FT	NIL
1648	LRBV	BUILDING	453900.8N 0253139.4E	1876/46 FT	NIL

NIL



a	b	c	d	e	f
1649	LRBV	POLE	454219.7N 0252659.3E	1909/67 FT	NIL
1650	LRBV	BUILDING	453936.0N 0253245.2E	1836/48 FT	NIL
1651	LRBV	BUILDING	453912.3N 0253038.4E	1880/34 FT	NIL
1652	LRBV	BUILDING	453833.0N 0252932.0E	1936/42 FT	NIL
1653	LRBV	POLE	453939.5N 0253354.1E	1803/25 FT	NIL
1654	LRBV	POLE	453939.1N 0253326.4E	1805/25 FT	NIL
1655	LRBV	POLE	453941.6N 0253259.0E	1810/25 FT	NIL
1656	LRBV	POLE	453943.7N 0253258.4E	1817/25 FT	NIL
1657	LRBV	POLE	453943.9N 0253203.7E	1827/25 FT	NIL
1658	LRBV	POLE	453947.6N 0253136.4E	1837/25 FT	NIL
1659	LRBV	POLE	453955.3N 0253111.2E	1842/25 FT	NIL
1660	LRBV	POLE	454003.9N 0253046.5E	1848/25 FT	NIL
1661	LRBV	POLE	454014.0N 0253028.6E	1845/25 FT	NIL
1662	LRBV	POLE	454017.1N 0252956.7E	1847/25 FT	NIL
1663	LRBV	POLE	454017.1N 0252931.6E	1848/25 FT	NIL
1664	LRBV	POLE	454034.8N 0252907.1E	1849/25 FT	NIL
1665	LRBV	POLE	454019.3N 0252957.3E	1844/28 FT	NIL
1666	LRBV	POLE	454036.6N 0252957.8E	1834/29 FT	NIL
1667	LRBV	POLE	454051.7N 0253015.4E	1819/31 FT	NIL
1668	LRBV	POLE	454106.7N 0253033.0E	1811/30 FT	NIL
1669	LRBV	POLE	454121.8N 0253050.4E	1799/25 FT	NIL
1670	LRBV	POLE	454134.6N 0253104.2E	1806/42 FT	NIL
1671	LRBV	POLE	454140.0N 0253109.8E	1806/43 FT	NIL
1672	LRBV	POLE	454145.2N 0253115.3E	1788/28 FT	NIL

NIL

In Area 3					
OBST ID/ Designation	OBST type	OBST position	ELEV/HGT	Markings/ Type, colour	Remarks
a	b	c	d	e	f
Not available					

LRBV AD 2.11 METEOROLOGICAL INFORMATION PROVIDED

1	Associated MET Office	ARAD
2	Hours of service MET Office outside hours	As AD Operator
3	Office responsible for TAF preparation Periods of validity Interval of issuance	LROM 9 HR 3 HR, during aerodrome operational hours
4	Type of landing forecast Interval of issuance	NIL -
5	Briefing / consultation provided	Self-briefing; briefing/consultation on request (see row 8)
6	Flight documentation Language(s) used	Charts, tabular form, abbreviated plain language text Romanian, English
7	Charts and other information available for briefing or consultation	SWC, W/T Charts, SIGMET, METAR, TAF Weather radar, satellite, lightnings images.
8	Supplementary equipment available for providing information	Briefing/consultation from Bucharest MET Office Tel. : +40-(0)21-2032153
9	ATS units provided with information	BRAȘOV TWR
10	Additional information (limitation of service, etc.)	NIL



LRBV AD 2.12 RUNWAY PHYSICAL CHARACTERISTICS

Designations RWY NR	TRUE BRG	Dimensions of RWY (M)	Strength (PCN) and surface of RWY and SWY	THR coord RWY end coord THR geoid undulation	THR elevation and highest elevation of TDZ of precision APP RWY	Slope of RWY-SWY
1	2	3	4	5	6	7
03	36.28°	2820 x 45	85/R/D/W/T Concrete	454145.68N 0253046.05E 454259.31N 0253203.23E GUND 127 FT	THR 1764 FT	-0.5% (2820 M)
21	216.30°	2820 x 45	85/R/D/W/T Concrete	454259.31N 0253203.23E 454145.68N 0253046.05E GUND 127 FT	THR 1717 FT TDZ 1721FT	0.5% (2820 M)
SWY dimensions (M)	CWY dimensions (M)	Strip dimensions (M)	RESA dimensions (M)	Location and description of ARST system	OFZ	Remarks
8	9	10	11	12	13	14
NIL	300 x 180	2940 x 280	240 x 120	NIL	NIL	RWY 03 turn pad Location: RWY 03 END Surface: Concrete Dimensions: 152Mx85M Strength: 85/R/D/W/T RWY Shoulders: 7.5m on each side
NIL	300 x 180	2940 x 280	240 x 120	NIL	NIL	RWY Shoulders: 7.5m on each side

LRBV AD 2.13 DECLARED DISTANCES

RWY designator	TORA (M)	TODA (M)	ASDA (M)	LDA (M)	Remarks
1	2	3	4	5	6
03	2820	3120	2820	2820	NIL
21	2820	3120	2820	2820	NIL

LRBV AD 2.14 APPROACH AND RWY LIGHTING

RWY Designator	APCH LGT type LEN INTST	THR LGT colour WBAR	VASIS (MEHT) PAPI	TDZ, LGT LEN	RWY Centre Line LGT Length, spacing, colour, INTST	RWY edge LGT LEN, spacing, colour, INTST	RWY End LGT colour WBAR	SWY LGT LEN (M) colour	Remarks
1	2	3	4	5	6	7	8	9	10
03	ALS-I 900M, LIH	Green WBAR	PAPI Left/3° (54 FT)	NIL	1920M, 15M, White, LIH 600M, 15M, White/Red, LIH 300M, 15M, Red, LIH	2220M, 60M, White, LIH 600M, 60M, Yellow, LIH	Red -	NIL	180° turn pad lighting at THR21
21	ALSF-II 900M, LIH	Green WBAR	PAPI Left/3° (59 FT)	White 900M	1920M, 15M, White, LIH 600M, 15M, White/Red, LIH 300M, 15M, Red, LIH	2220M, 60M, White, LIH 600M, 60M, Yellow, LIH	Red -	NIL	NIL

**LRBV AD 2.15 OTHER LIGHTING, SECONDARY POWER SUPPLY**

1	ABN / IBN location, characteristics and hours of operation	NIL
2	LDI location and LGT Anemometer location and LGT	NIL
3	TWY edge and centre line lighting	TWY edge: blue, omni-directional, LIL. TWY centre line: green, bi-directional, LIH.
4	Secondary power supply/switch-over time	Secondary power supply to all lighting on the AD, switch-over time below 1 sec.
5	Remarks	Apron floodlighting, obstacle lighting.

LRBV AD 2.16 HELICOPTER LANDING AREA

1	Coordinates TLOF or THR of FATO	NIL
2	TLOF and/or FATO elevation M/FT	NIL
3	TLOF and FATO area dimensions, surface, strength, marking	NIL
4	True and MAG BRG of FATO	NIL
5	Declared distance available	NIL
6	APP and FATO lighting	NIL
7	Remarks	NIL

LRBV AD 2.17 ATS AIRSPACE

1	Designation and lateral limits	BRAȘOV CTR (CTR1+CTR2+CTR3) CTR 1 460129N 0254357E - 455156N 0260636E - 452648N 0254246E - 453151N 0253235E - 452737N 0252226E - 452913N 0251905E - 453100N 0252240E - 453500N 0251630E - 453500N 0251407E - 453801N 0251150E - 460129N 0254357E CTR 2 453151N 0253235E - 452648N 0254246E - 452036N 0253658E - 452737N 0252226E - 453151N 0253235E CTR 3 453500N 0251407E - 453500N 0251630E - 453100N 0252240E - 452913N 0251905E - 452940N 0251809E - 453500N 0251407E
2	Vertical limits	CTR 1 - GND to FL105 CTR 2 - 6500 FT AMSL to FL105 CTR 3 - 6500 FT AMSL to FL105
3	Airspace classification	C
4	ATS unit call sign Language(s)	Brașov Tower English, Romanian
5	Transition altitude	7000 FT AMSL
6	Hours of applicability	As ATS
7	Remarks	NIL

LRBV AD 2.18 ATS COMMUNICATION FACILITIES

Service designation	Call sign	Channel/ Frequency	SATVOICE	Logon address	Hours of operation	Remarks
1	2	3	4	5	6	7
TWR/APP	Brașov Tower	118.630 120.135 ALTN 121.500 MHz EMERG	NIL	NIL	As ATS	Emergency frequency for all services



LRBV AD 2.19 RADIO NAVIGATION AND LANDING AIDS

Type of aid, MAG VAR Type of supported OPS ILS classification GBAS classification (For VOR/ILS/MLS give declination)	ID	Frequency/ Channel	Hours of operation	Position of transmitting antenna coordinates	ELEV of DME transmitting antenna/ ELEV of GBAS reference point	Service volume radius from the GBAS reference point	Remarks
1	2	3	4	5	6	7	8
DVOR (6°E/2022)	VBV	114.950 MHz	H24	454226.2N 0253117.5E	-	NIL	Coverage 40 NM (declared)
DME	VBV	CH 96Y	H24	454226.4N 0253117.0E	1800 FT	NIL	Coverage 40 NM (declared)
LOC 21 (6°E/2022) ILS CAT II (III.E.4)	IBV	110.100 MHz	H24	454138.2N 0253038.2E	-	NIL	Front course angle 3.94° No back course
GP 21	-	334.400 MHz	H24	454254.0N 0253150.8E	-	NIL	GP angle 3.0° ILS RDH 54 FT
DME 21	IBV	CH 38X	H24	454254.2N 0253150.6E	1800 FT	NIL	NIL
GPS NPA	-	1575.420 MHz	H24	-	-	NIL	Transmitting antennas are satellite based. Maintained by the U.S. Department of Defense.
EGNOS LPV	-	1575.420 MHz	H24	-	-	NIL	Transmitting antennas are satellite based. Maintained by the European Satellite Services Provider – ESSP.

LRBV AD 2.20 LOCAL AERODROME REGULATIONS

1. Airport regulations / Reglementări aeroport

1.1 Taxiing to and from stands

- a. Taxiing to and from stands shall be in accordance with the standard routes published in LRBV AD 2.20 Local Aerodrome Regulations.
- b. FOLLOW ME vehicle assistance, may be requested by the pilot via TWR
- c. Entry to the stand for aircraft will be made with guidance by the ground dispatcher;
- d. Upon arrival, helicopters will land on the runway and run on the ground / air according to standard runways. From the entrance on TWY A, the commander of the aircraft follows the markings to the point where he sees the ground dispatcher, following his signals until stop. The helicopters, for departure, taxi on the ground/air, following the marking, from the parking position to the runway.
- f. If the pilot operating on TWY A, does not have the ground dispatcher in sight, near the parking position communicated by TWR, he stops the aircraft and requests ATC, his presence.
- g. starting of the engines will be performed at the signals of the ground dispatcher only.

1.1 Rulajul la și de la standuri

- a. Rulajul la și de la standuri se efectuează conform rutelor standard publicate la LRBV AD 2.20 Local Aerodrome Regulations.
- b. Asistența vehiculului „FOLLOW ME” poate fi solicitată de pilot prin TWR.
- c. Intrarea la stand pentru aeronave se va face cu dirijare de către dispecerul de sol;
- d. Pentru sosire, elicopterele vor ateriza pe pistă și vor rula la sol/aerian conform rutelor standard de rulare. De la intrarea pe TWY A comandantul aeronavei urmează marcajele până la punctul în care are la vedere dispecerul de sol, urmând semnalele acestuia până la oprire. Elicopterele, pentru plecare, rulează la sol/aerian, urmând marcajul, de la poziția de parcare până la pistă.
- f. În cazul în care pilotul unei aeronave aflată în rulaj pe TWY A, nu are la vedere dispecerul de sol, în dreptul poziției de parcare comunicate de TWR, oprește aeronava și solicită ATC, prezența acestuia.
- g. Pornirea motoarelor se va executa la semnalele dispecerului de sol.

- h. aircraft with the letter code "A" or "B": exit from the stand without "push-back" if possible from the point of view of the maneuvering space, is performed only under the guidance of the ground dispatcher.
- i. For aircraft with wingspan greater than 24m, exit from the stand is performed only with push-back or with its own engines if the push-back equipment is not operational and there is maneuvering space.
- 1.2 Helicopter parking area
- a. Helicopters will be parked on the platform in a marked / unmarked position with the guidance of the ground dispatcher.
- b. Repositioning of helicopters on the platform is permitted with air / ground taxiing in compliance with the ground dispatcher's signals.
- 1.3 Taxi - limitations
- a. For aircraft with a wingspan greater than 24m, after landing on direction 03, the return is allowed only with the use of the Turn Pad.
- b. In order to avoid the effect of the jet blast on the circulation of vehicles and aircraft, the taxi for the departure from the stands, will be performed with the engines in "Idle" mode.
- h. Pentru aeronave cu litera de cod „A” sau „B”: ieșirea din stand fără „push-back” dacă este posibil din punct de vedere al spațiului de manevră, se efectuează numai sub dirijarea dispecerului de sol.
- i. aeronave cu anvergura mai mare de 24 m, ieșirea din stand se efectuează numai cu „push-back” sau cu propriile motoare dacă echipamentul „push-back” nu este operațional și există spațiu de manevră.
- 1.2 Zona de parcare pentru elicoptere
- a. Elicopterele vor fi parcate pe platformă pe o poziție marcată/nemarcată la semnalele dispecerului de sol.
- b. Repoziționarea elicopterelor pe platformă este permisă cu rulaj aerian/la sol cu respectarea semnalelor dispecerului de sol.
- 1.3 Rulare - limitări
- a. Pentru aeronavele cu anvergura mai mare de 24m, după aterizarea pe pista 03, întoarcerea este permisă doar cu folosirea buzunarului de întoarcere.
- b. Pentru evitarea efectului suflului motoarelor asupra circulației autovehiculelor și aeronavelor, rulajul pentru plecarea de la standuri, se va efectua cu motoarele în regim „Idle”.

2. Standard Taxi Routes / Rutele Standard de Rulare

The following taxi routes are available for taxiing on LRBV:

Următoarele rute de rulare sunt disponibile pe LRBV:

2.1 Arrival Information / Informații sosiri

Arrival on	Instructions given by ATC			Via TWY	Instructions	Remarks
	Route to be follow	Name of Standard Taxi Route	To			
RWY 03	Standard taxi route	Arrival 03	Stand number 1/2/3	A	After landing perform backtrack and vacate LEFT via TWY A	Backtrack of aircraft with wingspan greater than 24m is permitted only at the end of the RWY
RWY 21		Arrival 21			After landing, taxi and vacate LEFT via TWY A	NIL

2.2 Departure Information / Informații plecări

Departure from	Instructions given by ATC			Via TWY /	RWY in use	Instructions	Remarks
	Route to be follow	Name of Standard Taxi Route	To				
Stand 1/2/3	Standard taxi route	Departure 03	Active RWY	A	RWY 03	TWY A, taxi to THR, enter and line-up	NIL
		Departure 21			RWY 21	TWY A, turn RIGHT, taxi to the end of the RWY and line-up	NIL

3. Use of airport by aircraft with higher code letter / Utilizarea aeroportului de către aeronave cu literă de cod superioară

For aircraft with a code letter greater than 4C (wingspan greater than 36 m), aerodrome operator approval must be obtained prior to operation. The request will be sent to dispatch@brasovairport.ro at least 10 days before the flight. In case of declared emergencies, the airfield can be used without prior approval.

Pentru aeronave cu literă de cod superioară 4C (anvergură mai mare de 36m) trebuie să se obțină aprobarea operatorului de aerodrom anterior operării. Solicitarea va fi transmisă pe adresa dispatch@brasovairport.ro cu minim 10 zile înaintea zborului. În cazul situațiilor de urgență declarate, aerodromul poate fi utilizat fără aprobare prealabilă.

LRBV AD 2.21 NOISE ABATEMENT PROCEDURES

- NIL -



LRBV AD 2.22 FLIGHT PROCEDURES

- NIL -

LRBV AD 2.23 ADDITIONAL INFORMATION

- NIL -

LRBV AD 2.24 CHARTS RELATED TO THE AERODROME

Aerodrome Chart - ICAO	AD 2.29-20
Aircraft Parking/Docking Chart - ICAO	AD 2.29-22
Aerodrome Obstacle Chart - ICAO - Type A	
RWY 21	AD 2.29-25
RWY 03	AD 2.29-26
Precision Approach Terrain Chart - ICAO	
RWY 21	AD 2.29-28
Standard Departure Charts - Instrument - ICAO	
RWY 21	AD 2.29-30
RWY 03	AD 2.29-31/AD 2.29-32
RNAV Standard Departure Charts - Instrument - ICAO	
RWY 21	AD 2.29-33
RWY 03	AD 2.29-34/AD 2.29-35
Instrument Approach Charts - ICAO	
RWY 21 ILS	AD 2.29-52
RWY 03 RNP Z (LVP, LNAV only)	AD 2.29-76
Instrument Approach Charts	
RWY 03 Contingency RNP 03	AD 2.29-84

LRBV AD 2.25 VISUAL SEGMENT SURFACE (VSS) PENETRATION

- NIL -

AERODROME CHART - ICAO

45° 42' 22" N
025° 31' 24" E

BRASOV TOWER 118.630
BRASOV TOWER ALTN 120.135

BRĂȘOV / Brașov - Ghimbav
(LRBV)

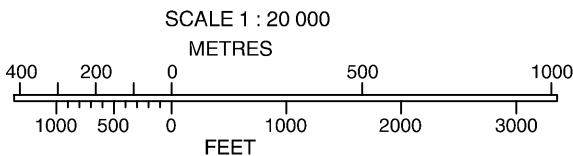
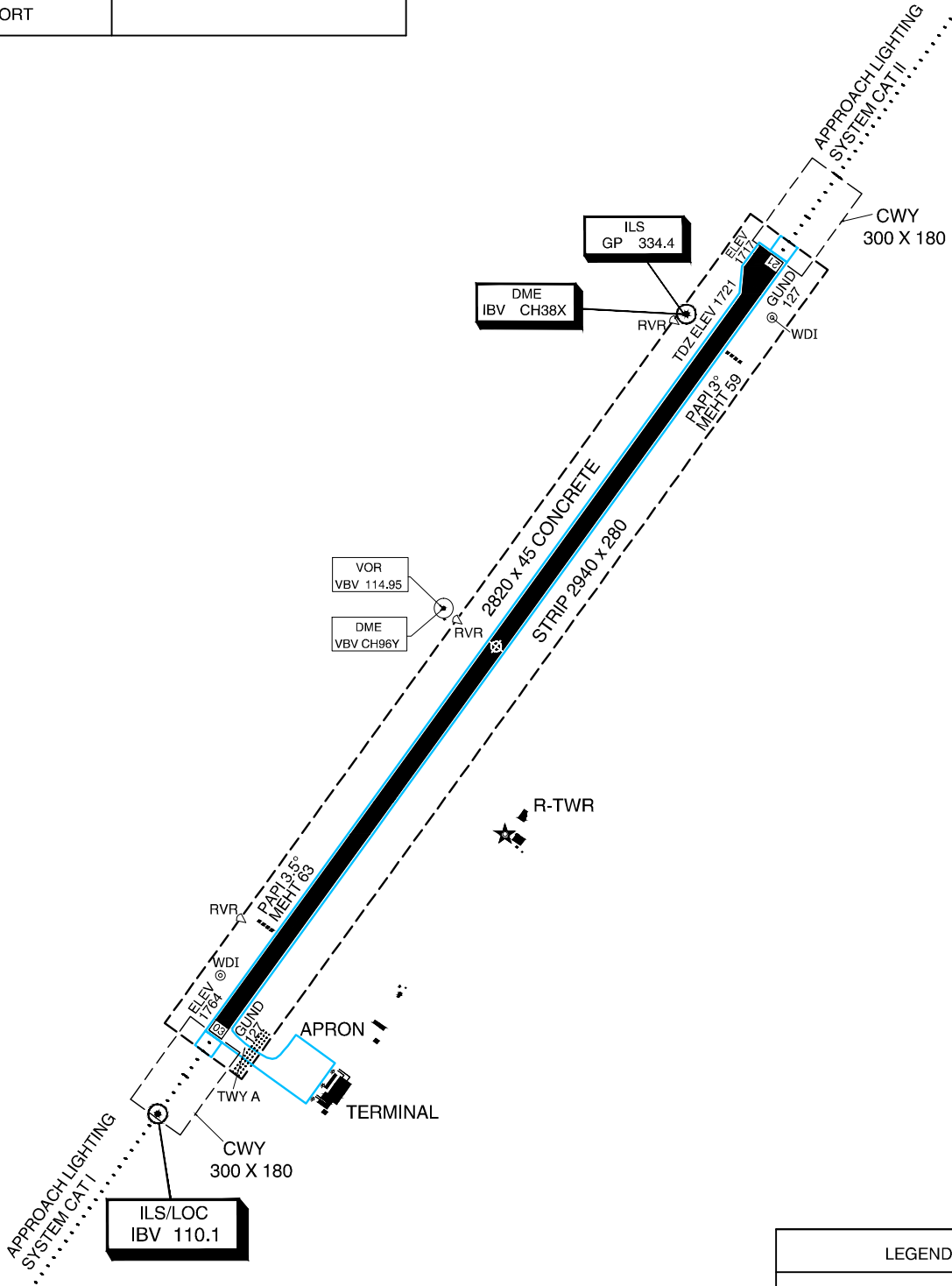
ELEV 1764 FT

RWY	DIRECTION	THR	BEARING STRENGTH
03	030°	45°41'46"N 025°30'46"E	PCN 85/R/D/W/T
21	210°	45°42'59"N 025°32'03"E	
HELIPORT			

ELEVATIONS IN FEET
DIMENSIONS IN METRES
BEARINGS ARE MAGNETIC

VAR 6°E 2022
ANNUAL RATE
OF CHANGE 7.2°E

New Chart



LEGEND	
RVR OBSERVATION SITE	
ATC SERVICE BOUNDARY	
APRON FLOODLIGHT	
WIND DIRECTION INDICATOR	
AERODROME REFERENCE POINT	
BUILDING	



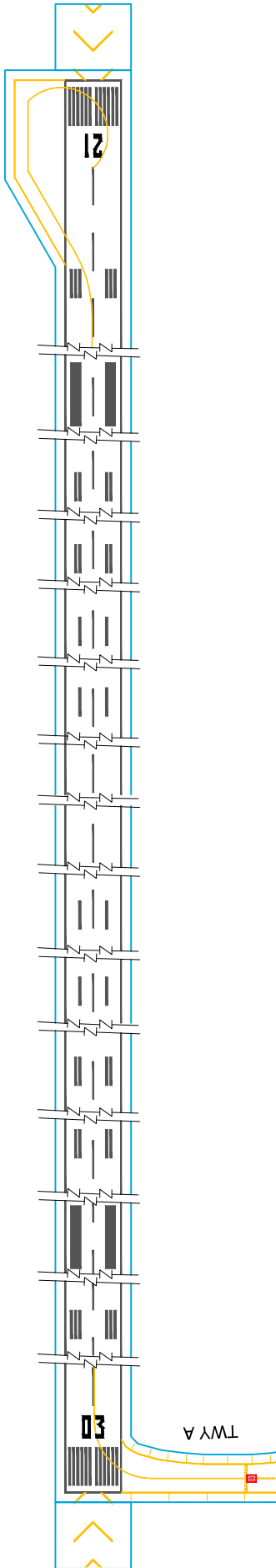
AERODROME CHART - ICAO 45° 42' 22" N
025° 31' 24" E

BRASOV TOWER 118.630
BRASOV TOWER ALTN 120.135

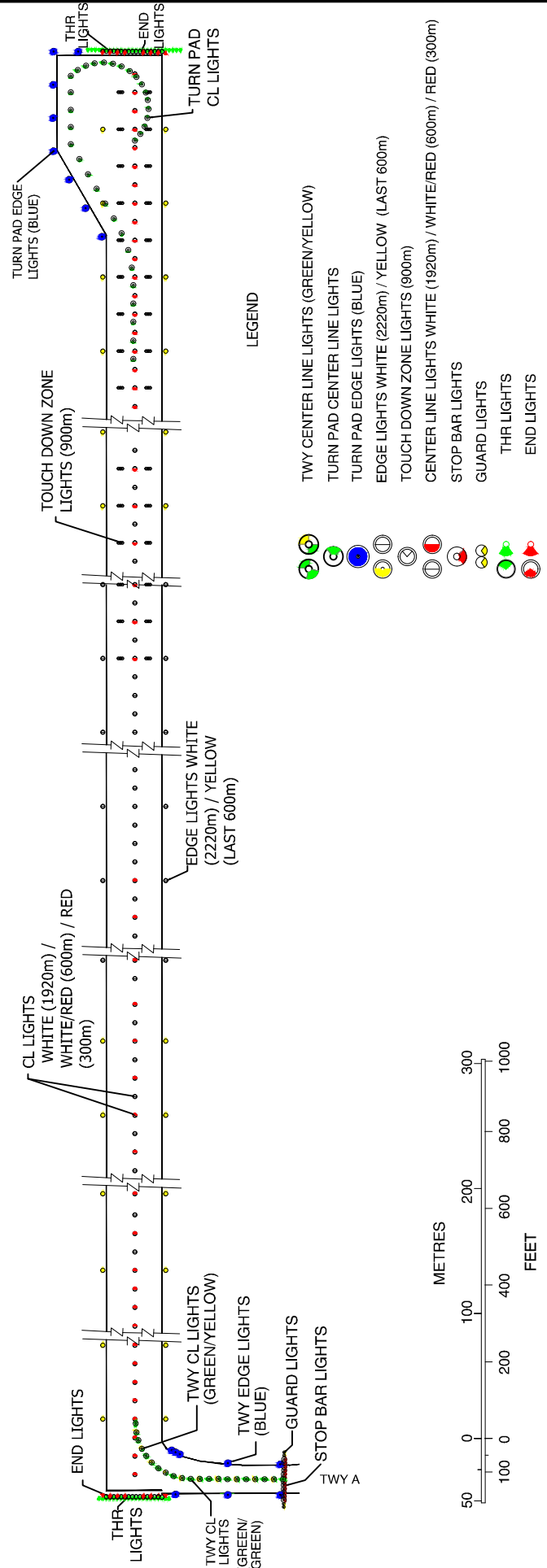
BRAȘOV / Brașov - Ghimbav
(LRBV)

ELEV 1764 FT

MARKING AIDS RWY 03 / 21 AND EXIT TWY



LIGHTING AIDS RWY 03 / 21 AND EXIT TWY



New chart

**AIRCRAFT PARKING/
DOCKING CHART - ICAO**

APRON ELEV
1760 FT

BRASOV TOWER 118.630
BRASOV TOWER ALTN 120.135

**BRAȘOV / Brașov - Ghimbav
(LRBV)**

ELEVATIONS IN FEET
DIMENSIONS IN METERS
BEARINGS ARE MAGNETIC

ANNUAL RATE
OF CHANGE 7.2'

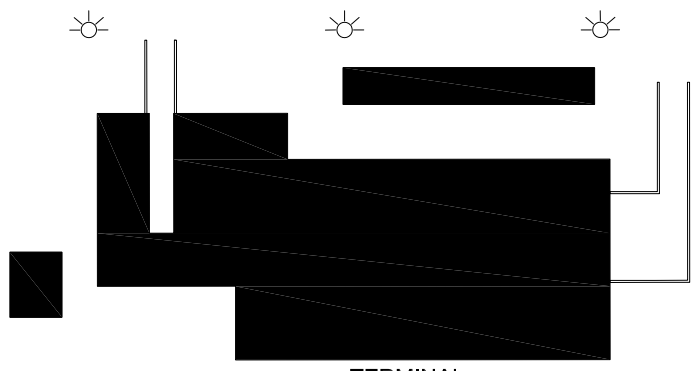
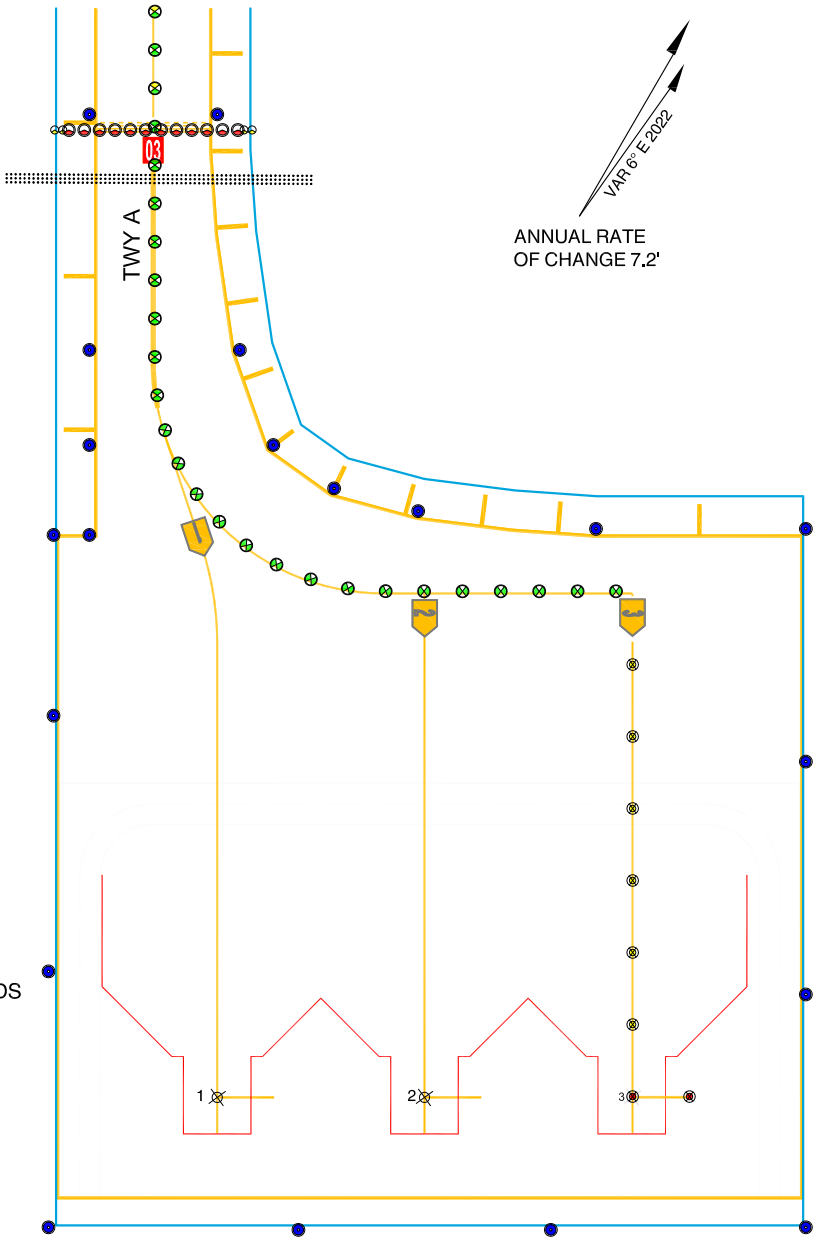
New chart.

INS COORDINATES FOR AIRCRAFT STANDS
 INS1 45°41'40.35"N 025°30'58.29"E
 INS2 45°41'41.41"N 025°30'59.39"E
 INS2A 45°41'41.75"N 025°31'00.32"E
 INS3 45°41'42.47"N 025°31'00.50"E

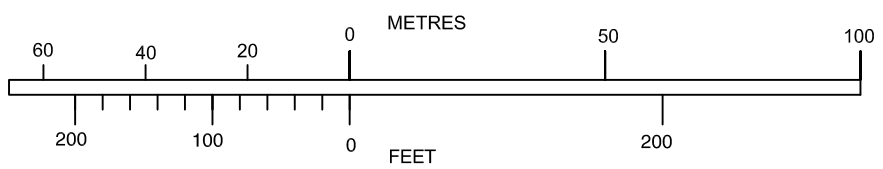
TWY A: 23 M WIDE
 BEARING STRENGTH FOR STANDS 104/R/C/W/T
 BEARING STRENGTH FOR TWY A 124/R/C/W/T

Exit with push-back and marshaller assistance.

LEGEND:	
TAXI GUIDANCE LINE	
INS CHECK POINTS	
TO AIRCRAFT STAND	
FLOODLIGHT	
BUILDING	
MOVEMENT SURFACE BOUNDARY	
ATC SERVICE BOUNDARY	
TAXI HOLDING POSITION	
ENHANCED TAXIWAY CENTRE LINE	
MARKING SAFETY ZONE MARKING	
RUNWAY HOLDING POSITION LIGHT	
TAXIWAY CENTER LINE LIGHT	
TAXIWAY EDGE LIGHT	
GUARD LIGHT	
AIRCRAFT STAND MANOEUVRING GUIDANCE LIGHT	



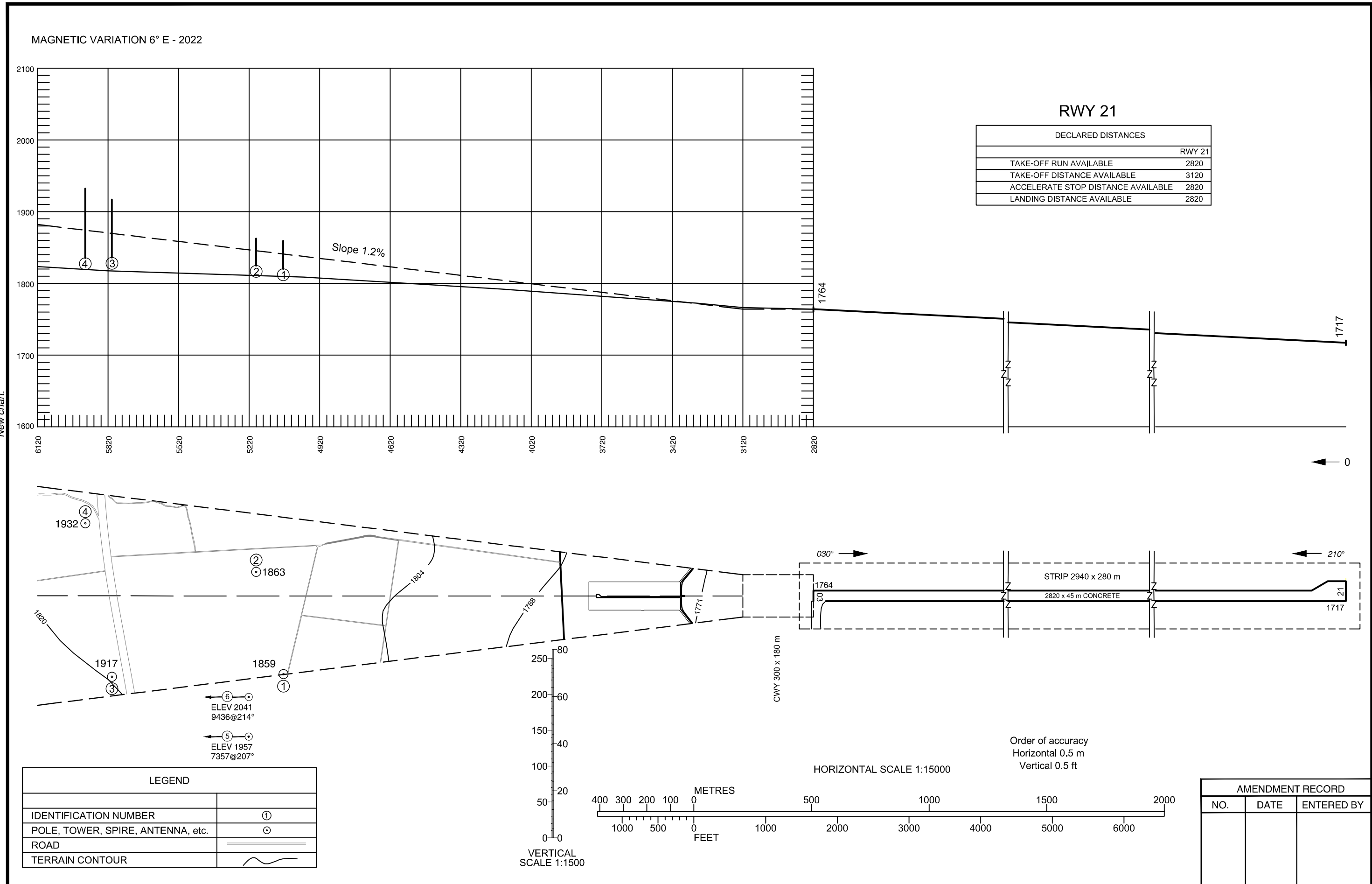
Stand no.	Aircraft	Maximum Aircraft Type
1 - 3	Aircraft with wingspan = 36m (Code letter C)	A 321 / B 737



AERODROME OBSTACLE CHART - ICAO
TYPE A (OPERATING LIMITATIONS)

BRAȘOV / Brașov-Ghimbav (LRBV)

ELEVATIONS IN FEET AND DIMENSIONS IN METRES



AERODROME OBSTACLE CHART - ICAO
TYPE A (OPERATING LIMITATIONS)

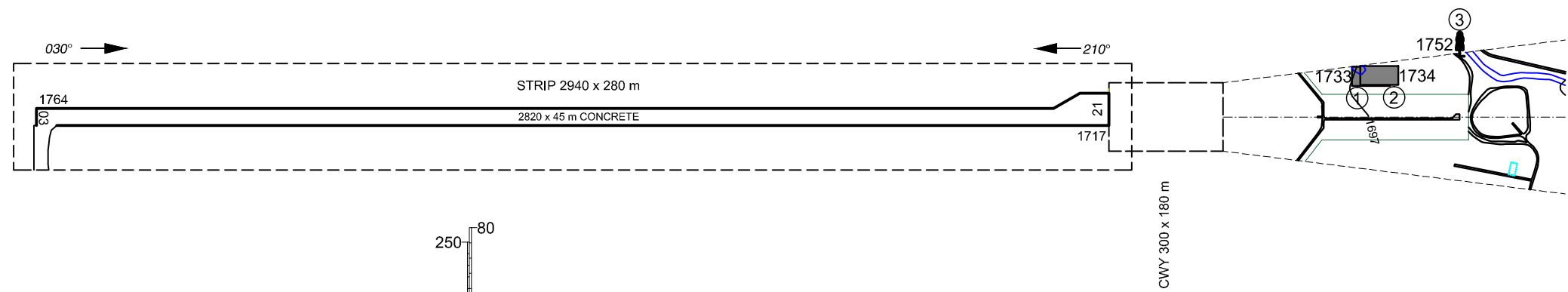
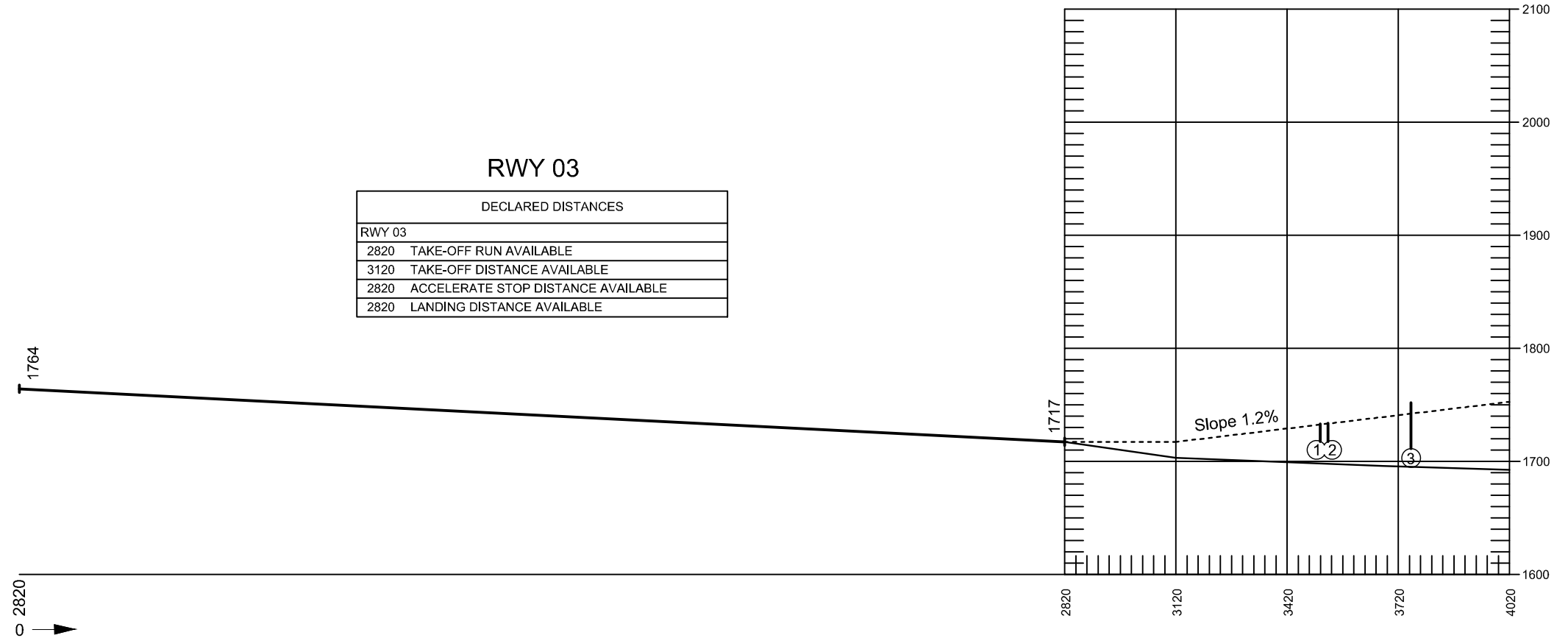
BRAȘOV / Brașov-Ghimbav (LRBV)

ELEVATIONS IN FEET AND DIMENSIONS IN METRES

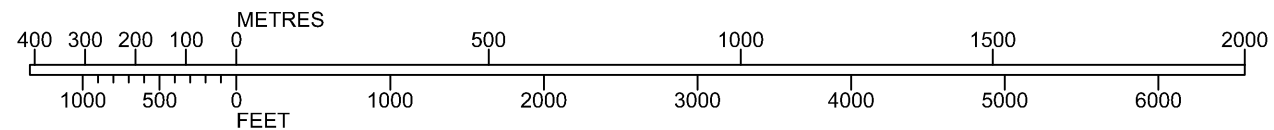
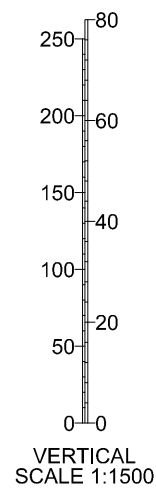
MAGNETIC VARIATION 6° E - 2022

RWY 03

DECLARED DISTANCES	
RWY 03	
2820	TAKE-OFF RUN AVAILABLE
3120	TAKE-OFF DISTANCE AVAILABLE
2820	ACCELERATE STOP DISTANCE AVAILABLE
2820	LANDING DISTANCE AVAILABLE



LEGEND	
IDENTIFICATION NUMBER	①
POLE, TOWER, SPIRE, ANTENNA, etc.	⊙
ROAD	====
TERRAIN CONTOUR	~~~~~
TREE OR SHRUB	🌳
BUILDING OR LARGE STRUCTURE	■



Order of accuracy
Horizontal 0.5 m
Vertical 0.5 ft

AMENDMENT RECORD		
NO.	DATE	ENTERED BY

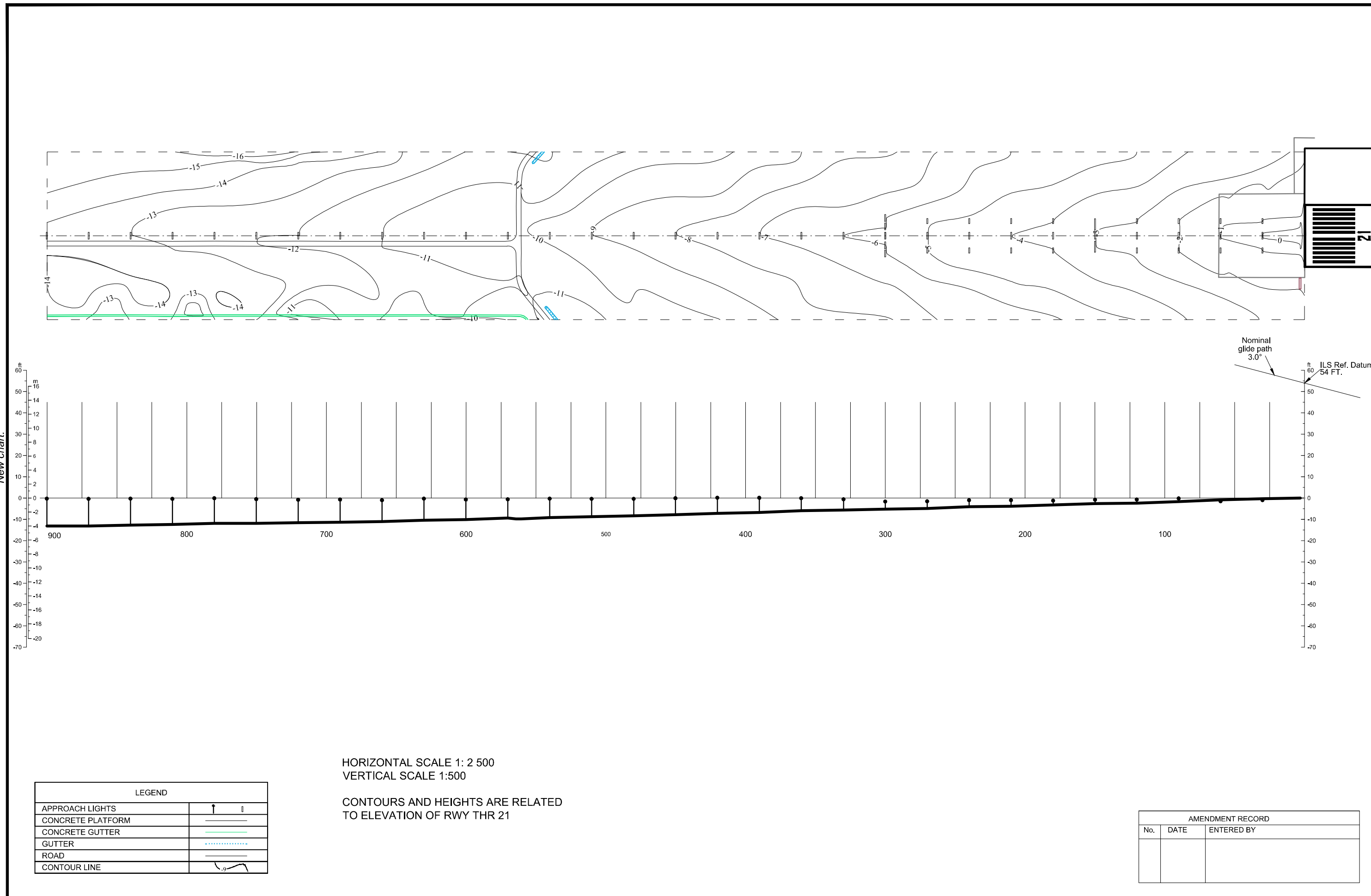
New chart.

PRECISION APPROACH TERRAIN CHART - ICAO

BRAȘOV / Brașov - Ghimbav (LRBV)

RWY 21

DISTANCES IN METRES AND HEIGHTS IN FEET



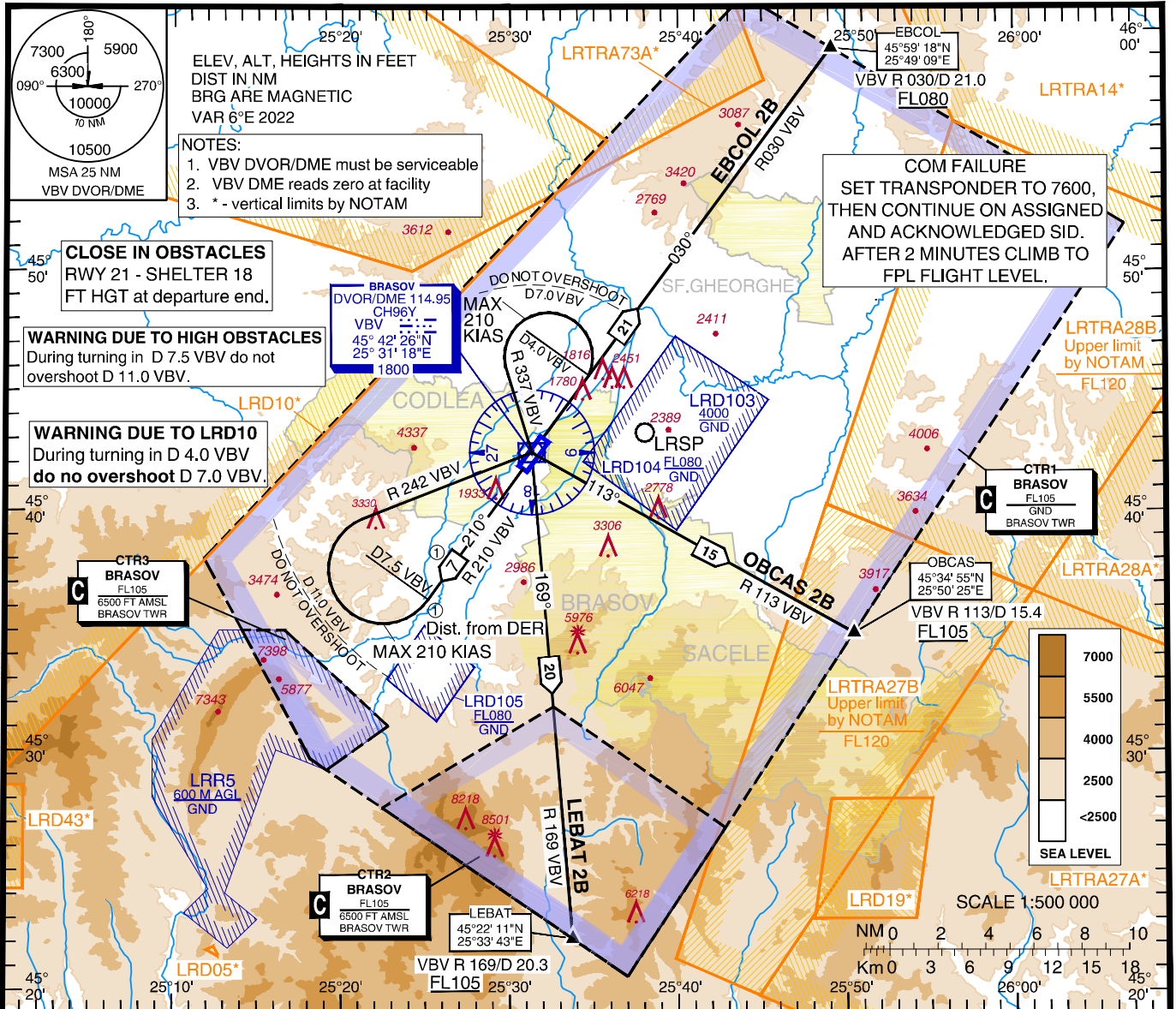
STANDARD DEPARTURE CHART -
INSTRUMENT (SID) - ICAO

TRANSITION ALTITUDE
7000 FT

BRASOV TWR 118.630
BRASOV TWR ALTN 120.135

BRASOV/Braşov - Ghimbav (LRBV)

RWY 21
EBCOL 2B, OBCAS 2B,
LEBAT 2B



DESIGNATOR	DEPARTURE ROUTE AND LEVEL INSTRUCTIONS/REMARKS
EBCOL 2B	Climb on R 210 VBV to 7.5 VBV. Turn RIGHT to intercept R242 VBV to VBV DVOR/DME, continue on R 030 VBV to EBCOL. Cross EBCOL at or above FL080. PDG 5.5% until 6300 FT due to obstacles. Turns limited to MAX 210 KIAS. If unable to comply contact ATC before departure.
OBCAS 2B	Climb on R 210 VBV to 7.5 VBV. Turn RIGHT to intercept R 242 VBV to VBV DVOR/DME, continue on R 113 VBV to OBCAS. Cross OBCAS at or above FL105. PDG min 5.5% until 6300 FT due to obstacles. Turns limited to MAX 210 KIAS. Contact ATC if unable to comply.
LEBAT 2B	Climb on R 210 VBV to 7.5 VBV. Turn RIGHT to intercept R242 VBV to VBV DVOR/DME, continue on R 030 VBV. At D 4.0 VBV turn LEFT to VBV DVOR/DME intercepting R 337 VBV to VBV DVOR/DME, continue on R169 VBV to LEBAT. Cross LEBAT at or above FL105. PDG min 5.5% until FL105 due to obstacles. Turns limited to MAX 210 KIAS. If unable to comply contact ATC before departure .



BRAȘOV / Brașov - Ghimbav (LRBV)
SID RWY 21

AERONAUTICAL DATA TABULATION

SID RWY 21	
Waypoint Identifier	Coordinates
DER 21	45°41'41.66" N 025°30'30.47" E
EBCOL (R 030/ D 21.0 VBV)	45°59'18.0" N 025°49'09.4" E
OBCAS (R 113/ D 15.4 VBV)	45°34'55.2" N 025°50'25.2" E
LEBAT (R 169/ D 20.3 VBV)	45°22'10.8" N 025°33'42.6" E
VBV DVOR/DME	45°42'26.2" N 025°31'17.5" E

Leg	Distance [NM]	True Track [°]	Magnetic Track [°]
EBCOL 2B			
DER21 – D 7.5 VBV	6.58	216.18	209.81 FROM DVORDME VBV
D 7.5 VBV – VBV DVOR/DME	15.37	-	-
VBV DVOR/DME – EBCOL	20.98	036.62	030.25 FROM DVORDME VBV
OBCAS 2B			
DER21 – D 7.5 VBV	6.58	216.18	209.81 FROM DVORDME VBV
D 7.5 VBV – VBV DVOR/DME	15.37	-	-
VBV DVOR/DME – OBCAS	15.38	119.37	113.00 FROM DVORDME VBV
LEBAT 2B			
DER21 – D 7.5 VBV	6.58	216.18	209.81 FROM DVORDME VBV
D 7.5 VBV – VBV DVOR/DME	15.37	-	-
VBV DVOR/DME – D 4.0 VBV	4.0	036.39	030.02 FROM DVORDME VBV
D 4.0 VBV – VBV DVOR/DME	12.15	-	-
VBV DVOR/DME – LEBAT	20.33	175.21	168.84 FROM DVORDME VBV

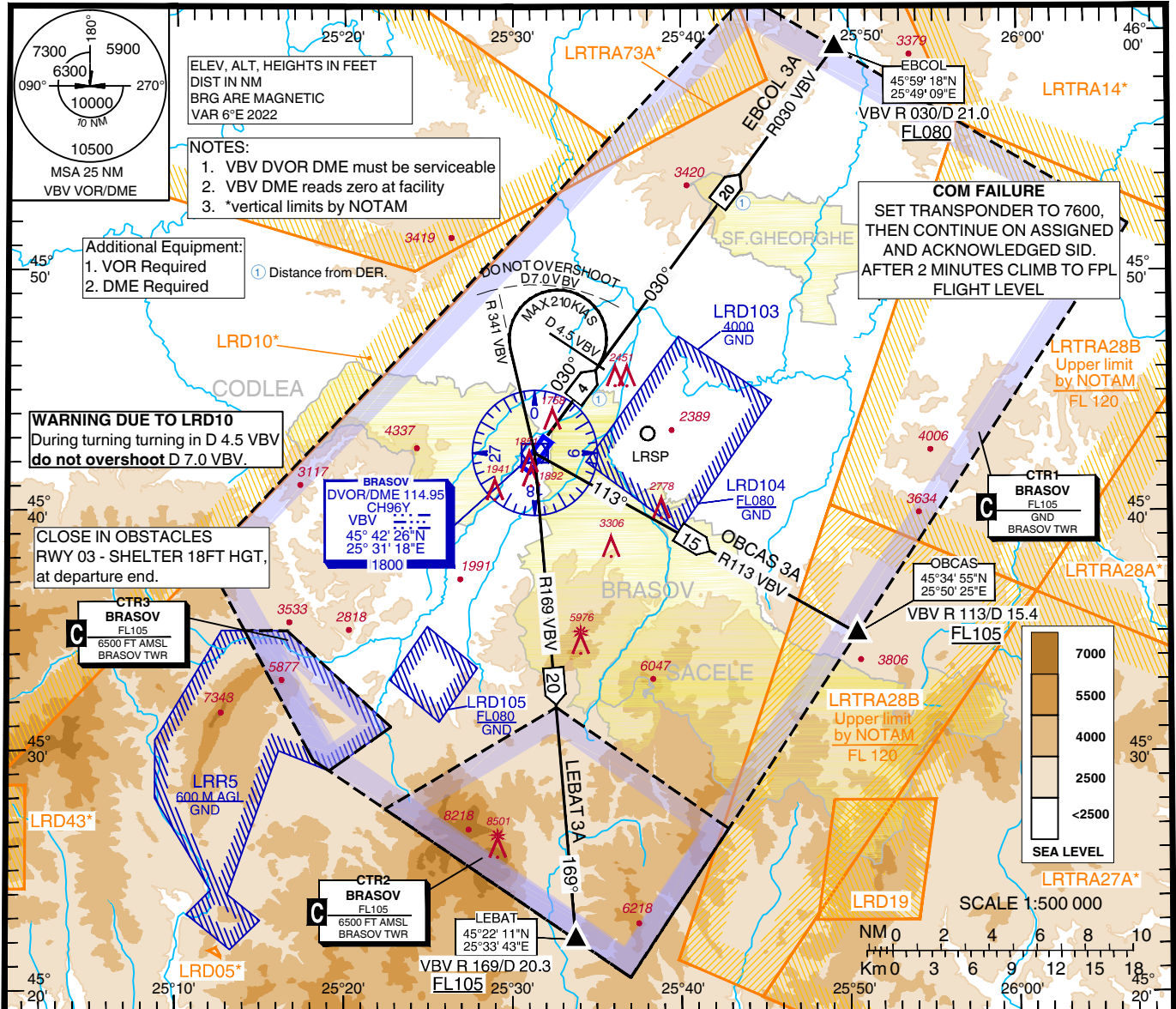
TRANSITION ALTITUDE 7000

BRAȘOV/Brașov - Ghimbav (LRBV)

STANDARD DEPARTURE CHART
INSTRUMENT (SID) - ICAO

BRASOV TWR 118.630
BRASOV TWR ALTN 120.135

RWY 03
EBCOL 3A, OBCAS 3A,
LEBAT 3A



DESIGNATOR DEPARTURE ROUTE	DEPARTURE ROUTE AND LEVEL INSTRUCTIONS / REMARKS
EBCOL 3A	Climb on R 030 to EBCOL. Cross EBCOL at or above FL080. PDG min 5.2% due to airspace structure. If unable to comply contact ATC before departure.
OBCAS 3A	Climb on R 030 to D 4.5 VBV. Turn LEFT to intercept R 341 VBV to VBV DVOR/DME, continue on R 113 VBV to OBCAS. Cross OBCAS at or above FL105. PDG min 6.4% due to airspace structure. Turns limited to MAX 210 KIAS. If unable to comply contact ATC before departure.
LEBAT 3A	Climb on R 030 to D 4.5 VBV. Turn LEFT to intercept R 341 VBV DVOR/DME, continue on R 169 VBV to LEBAT. Cross LEBAT at or above FL105. PDG min 6.0% until FL105 due to obstacles. Turns limited to MAX 210 KIAS. If unable to comply contact ATC before departure.



BRAȘOV / Brasov – Ghimbav (LRBV)
SID 3A RWY 03

AERONAUTICAL DATA TABULATION

WAYPOINT LIST

SID 3A RWY 03	
Waypoint Identifier	Coordinates
DER 03	45°43'10.81" N 025°32'04.26" E
EBCOL (R 030 / D 21.0 VBV)	45°59'18.0" N 025°49'09.4" E
OBCAS (R 113 / D 15.4 VBV)	45°34'55.2" N 025°50'25.2" E
LEBAT (R 169 / D 20.3 VBV)	45°22'10.8" N 025°33'42.6" E
VBV DVOR/DME	45°42'26.2" N 025°31'17.5" E

LRBV DEPARTURE SEQUENCE SID 3A RWY 03

Leg	Distance [NM]	True Track [°]	Magnetic Track [°]
EBCOL 3A			
DER03 – EBCOL	20.06	036.62	030.25 FROM DVORDME VBV
OBCAS 3A			
DER03 – D 4.5 VBV	3.6	036.31	029.94 FROM DVORDME VBV
D 4.5 VBV – VBVDVOR/DME	12.69	344.11	337.74 FROM DVORDME VBV
VBV DVOR/DME – OBCAS	15.38	119.37	113.00 FROM DVORDME VBV
LEBAT 3A			
DER03 – D 4.5 VBV	3.6	036.31	029.94 FROM DVORDME VBV
D 4.5 VBV – VBV DVOR/DME	12.69	344.11	337.74 FROM DVORDME VBV
VBV DVOR/DME - LEBAT	20.33	175.22	168.85 FROM DVORDME VBV

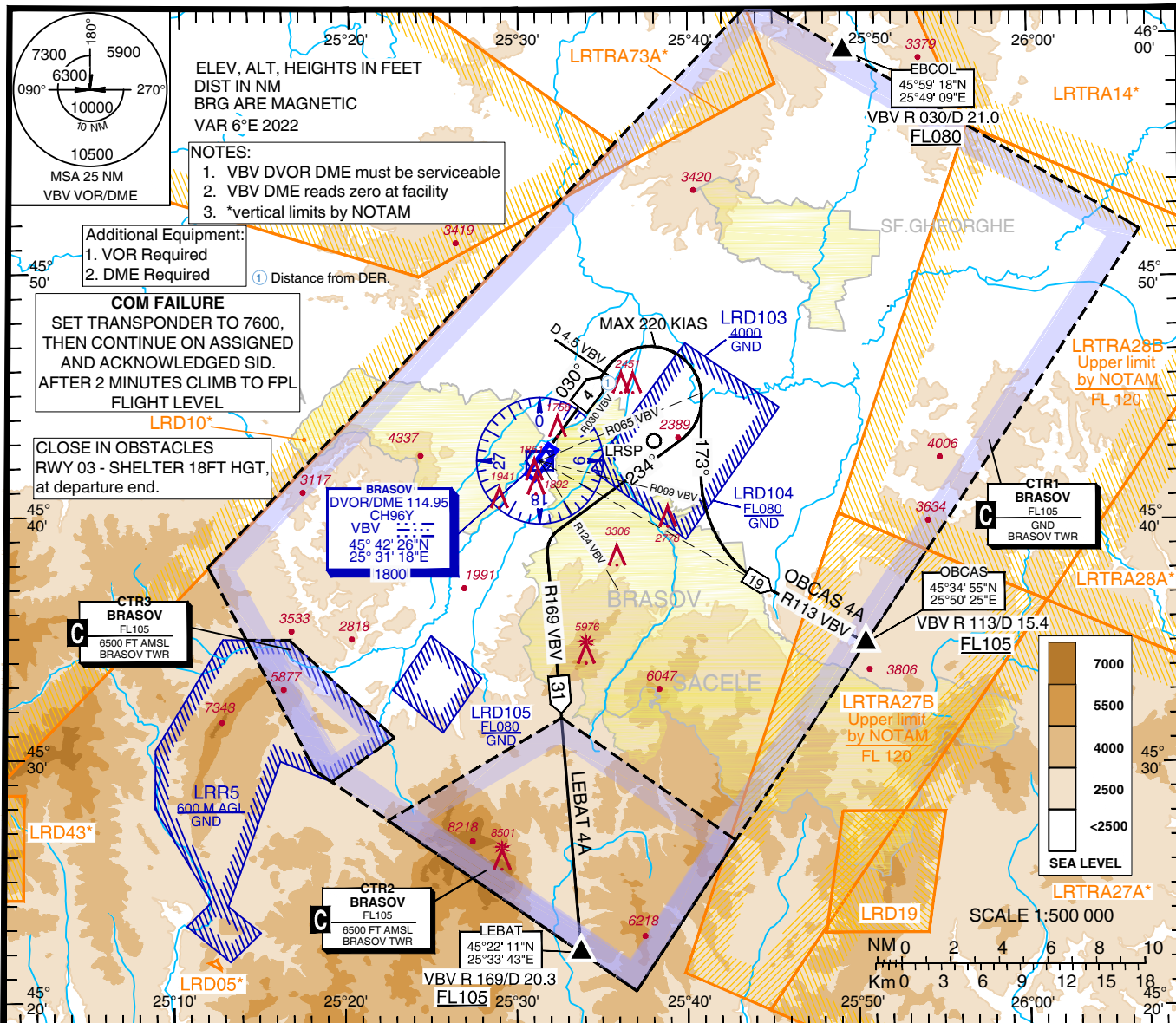
TRANSITION ALTITUDE 7000

BRAȘOV/Brașov - Ghimbav (LRBV)

STANDARD DEPARTURE CHART
INSTRUMENT (SID) - ICAO

BRASOV TWR 118.630
BRASOV TWR ALTN 120.135

RWY 03
OBCAS 4A, LEBAT 4A



DESIGNATOR DEPARTURE ROUTE	DEPARTURE ROUTE AND LEVEL INSTRUCTIONS / REMARKS
OBCAS 4A	Climb on R 030 to D 4.5 VBV. Turn RIGHT on track 173° to intercept R 113 VBV to OBCAS. Cross OBCAS at or above FL105. PDG min 8.3% due to airspace structure. Turns limited to MAX 220 KIAS. Contact ATC if unable to comply.
LEBAT 4A	Climb on R 030 to D 4.5 VBV. Turn RIGHT on track 234° to intercept R 169 VBV to LEBAT. Cross LEBAT at or above FL105. PDG min 6.6% until FL105 due to obstacles. Turns limited to MAX 220 KIAS. Contact ATC if unable to comply.



BRAȘOV / Brașov - Ghimbav (LRBV)
SID 4A RWY 03

AERONAUTICAL DATA TABULATION

WAYPOINT LIST

SID 4A RWY 03	
Waypoint Identifier	Coordinates
DER 03	45°43'10.81" N 025°32'04.26" E
EBCOL (R 030 / D 21.0 VBV)	45°59'18.0" N 025°49'09.4" E
OBCAS (R 113 / D 15.4 VBV)	45°34'55.2" N 025°50'25.2" E
LEBAT (R 169 / D 20.3 VBV)	45°22'10.8" N 025°33'42.6" E
VBV DVOR/DME	45°42'26.2" N 025°31'17.5" E

LRBV DEPARTURE SEQUENCE SID 4A RWY 03

Leg	Distance [NM]	True Track [°]	Magnetic Track [°]
OBCAS 4A			
DER03 – D 4.5 VBV	3.6	036.31	029.94 FROM DVORDME VBV
D 4.5 VBV – OBCAS	19.13	119.37	113.00 FROM DVORDME VBV
LEBAT 4A			
DER03 – D 4.5 VBV	3.6	036.31	029.94 FROM DVORDME VBV
D 4.5 VBV – LEBAT	31.43	175.22	168.85 FROM DVORDME VBV

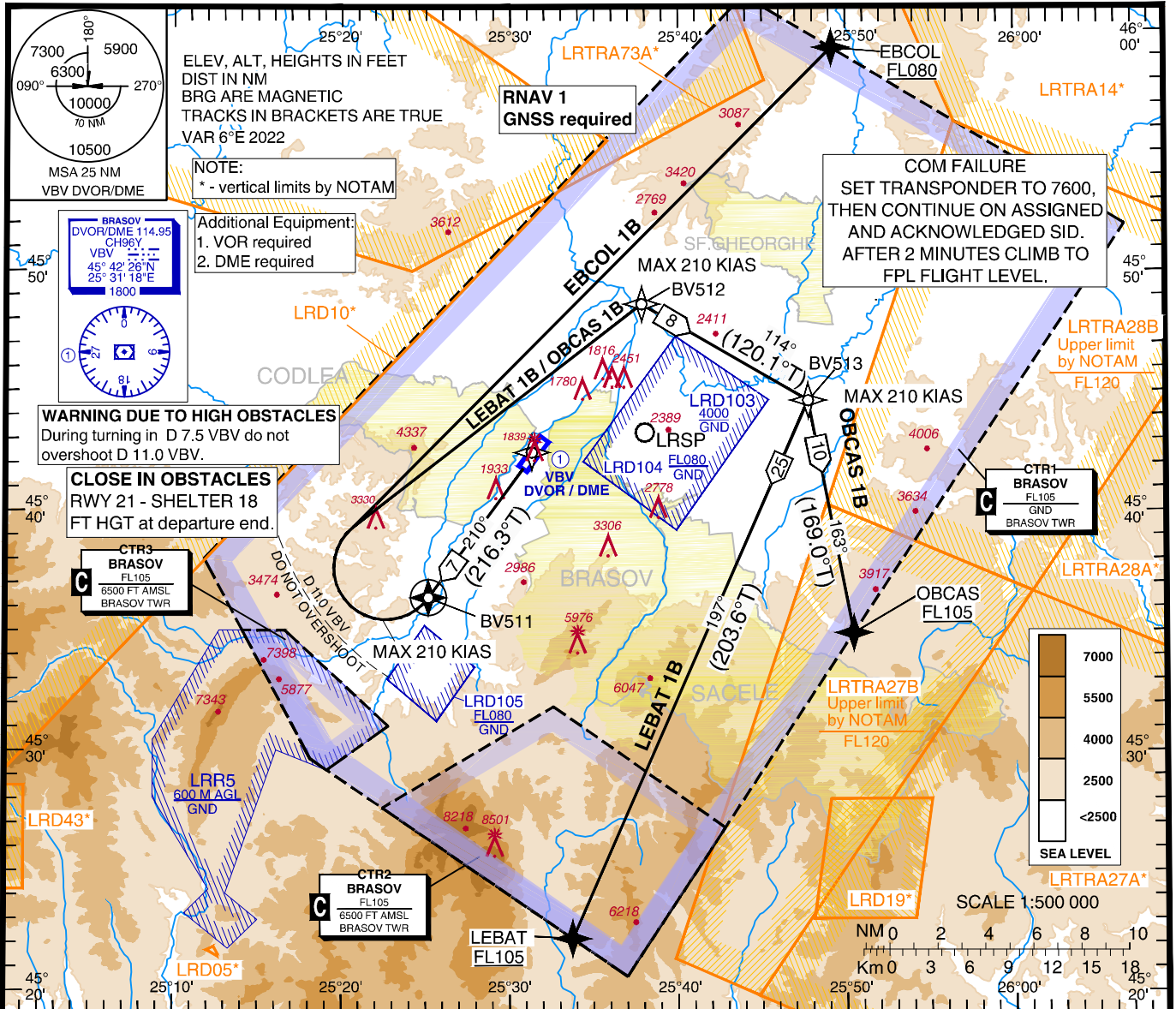
**RNAV
STANDARD DEPARTURE CHART -
INSTRUMENT (SID) - ICAO**

TRANSITION ALTITUDE
7000 FT

BRAȘOV/Brașov - Ghimbav (LRBV)

BRASOV TWR 118.630
BRASOV TWR ALTN 120.135

**RWY 21
EBCOL 1B, OBCAS 1B,
LEBAT 1B**



DESIGNATOR	DEPARTURE ROUTE AND LEVEL INSTRUCTIONS/REMARKS
EBCOL 1B	Climb on runway track to BV511 , turn RIGHT direct to EBCOL . Cross EBCOL at or above FL080 . PDG min 5.7% until 6000 FT due to obstacles. Turn limited to MAX 210 KIAS. If unable to comply contact ATC before departure.
OBCAS 1B	Climb on runway track to BV511 , turn RIGHT direct to BV512 . Continue on track 114° to BV513 , then turn RIGHT on track 163° to OBCAS . Cross OBCAS at or above FL105 . PDG min 5.7% until 6000 FT due to obstacles. Turn limited to MAX 210 KIAS. If unable to comply contact ATC before departure.
LEBAT 1B	Climb on runway track to BV511 , turn RIGHT direct to BV512 . Continue on track 114° to BV513 , then turn RIGHT on track 197° to LEBAT . Cross LEBAT at or above FL105 . PDG min 5.7% until 6000 FT due to obstacles. Turn limited to MAX 210 KIAS. If unable to comply contact ATC before departure.



BRAȘOV / Brașov - Ghimbav (LRBV)
RNAV SID RWY 21

AERONAUTICAL DATA TABULATION

RNAV SID RWY 21		
<i>Waypoint Identifier</i>	<i>Coordinates</i>	
DER	45°41'37.8" N	025°30'37.9" E
BV511	45°36'23.3" N	025°25'09.1" E
BV512	45°48'36.6" N	025°37'50.1" E
BV513	45°44'36.2" N	025°47'43.8" E
EBCOL	45°59'18.0" N	025°49'09.4" E
OBCAS	45°34'55.2" N	025°50'25.2" E
LEBAT	45°22'10.8" N	025°33'42.6" E

TABULAR DESCRIPTION

RNAV SID RWY 21											
<i>Serial Number</i>	<i>Path Descriptor</i>	<i>Waypoint ID</i>	<i>Flyover</i>	<i>Course °M (°T)</i>	<i>Magnetic Variation</i>	<i>Distance (NM)</i>	<i>Turn Direction</i>	<i>Altitude (ft)</i>	<i>Speed (kts)</i>	<i>VPA/TCH</i>	<i>Navigation Specification</i>
EBCOL 1B											
010	CF	BV511	Y	210 (216.3)	-6.4	6.5	-	-	-210	-	RNAV 1
020	DF	EBCOL	-	-	-6.4	-	R	+FL080	-	-	RNAV 1
OBCAS 1B											
010	CF	BV511	Y	210 (216.3)	-6.4	6.5	-	-	-210	-	RNAV 1
020	DF	BV512	-	-	-6.4	-	R	-	-	-	RNAV 1
030	TF	BV513	-	114 (120.1)	-6.4	8.0	R	-	-	-	RNAV 1
040	TF	OBCAS	-	163 (169.0)	-6.4	9.9	R	+FL105	-	-	RNAV 1
LEBAT 1B											
010	CF	BV511	Y	210 (216.3)	-6.4	6.5	-	-	-210	-	RNAV 1
020	DF	BV512	-	-	-6.4	-	R	-	-	-	RNAV 1
030	TF	BV513	-	114 (120.1)	-6.4	8.0	R	-	-	-	RNAV 1
040	TF	LEBAT	-	197 (203.6)	-6.4	24.5	R	+FL105	-	-	RNAV 1

RNAV
STANDARD DEPARTURE CHART
INSTRUMENT (SID) - ICAO

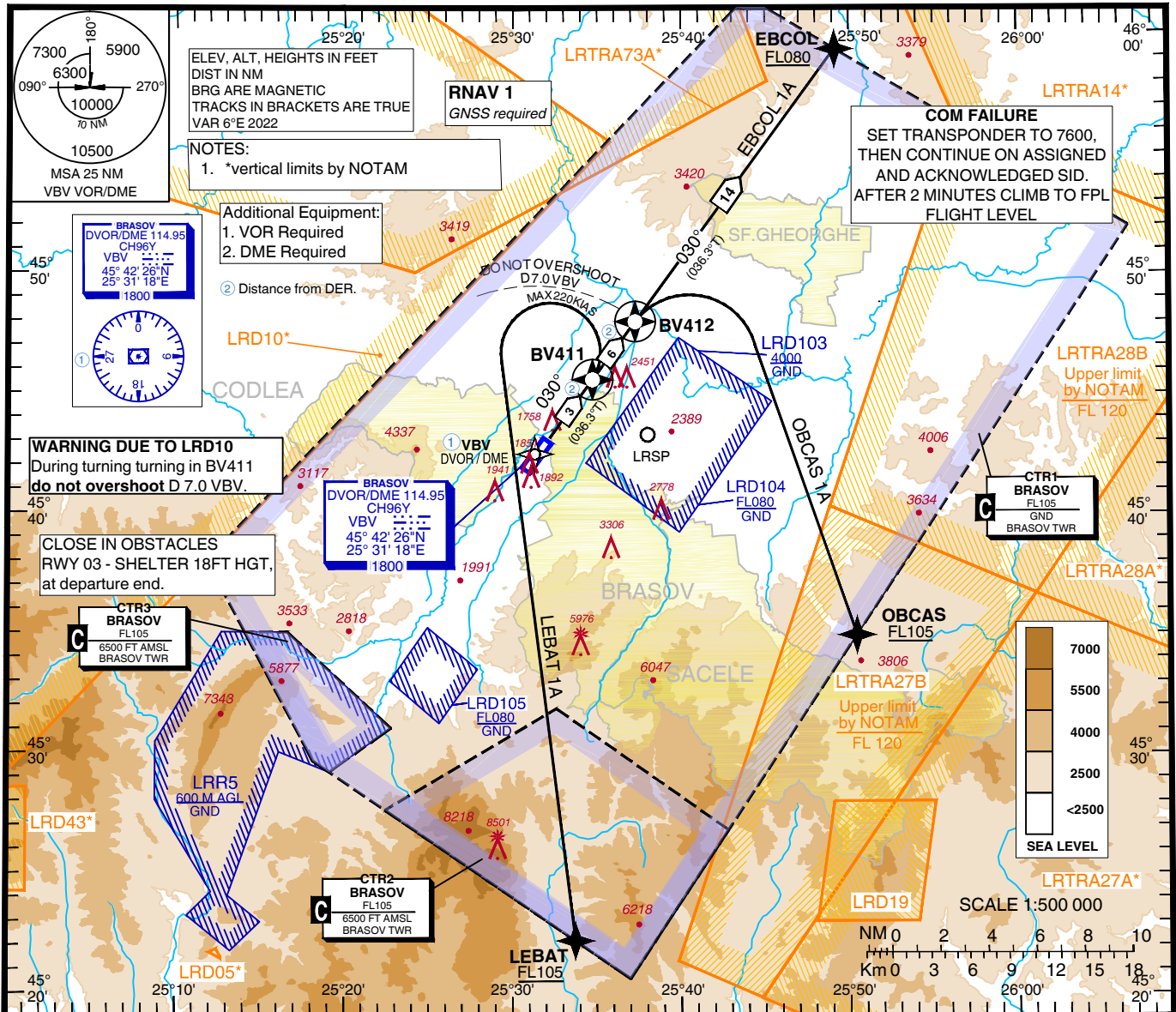
TRANSITION ALTITUDE 7000

BRAȘOV/Brașov - Ghimbav (LRBV)

BRASOV TWR 118.630
BRASOV TWR ALTN 120.135

RWY 03

EBCOL 1A, OBCAS 1A,
LEBAT 1A



DESIGNATOR DEPARTURE ROUTE	DEPARTURE ROUTE AND LEVEL INSTRUCTIONS / REMARKS
EBCOL 1A	Climb on runway track to BV412, continue on track 030° to EBCOL. Cross EBCOL at or above FL080. PDG min 5.2% due to airspace structure. If unable to comply contact ATC before departure.
OBCAS 1A	Climb on runway track to BV412, turn RIGHT direct to OBCAS. Cross OBCAS at or above FL105. PDG min 7.4% due to airspace structure. If unable to comply contact ATC before departure.
LEBAT 1A	Climb on runway track to BV411, turn LEFT direct to LEBAT. Cross LEBAT at or above FL105. PDG min 7.2% until FL100 due to obstacles. Turns limited to MAX 220 KIAS. During turning in BV411 do not overshoot D 7.0 VBV. If unable to comply contact ATC before departure.



**BRAȘOV / Brașov - Ghimbav (LRBV)
SID 1A RWY 03**

AERONAUTICAL DATA TABULATION

WAYPOINT LIST

RNAV SID 1A RWY 03	
Waypoint Identifier	Coordinates
DER	45°43'07.1" N 025°32'11.4" E
BV411	45°45'32.2" N 025°34'43.6" E
BV412	45°47'57.2" N 025°37'16.0" E
EBCOL	45°59'18.0" N 025°49'09.4" E
OBCAS	45°34'55.2" N 025°50'25.2" E
LEBAT	45°22'10.8" N 025°33'42.6" E

LRBV RNAV DEPARTURE SEQUENCE SID 1A RWY 03

Serial Number	Path Descriptor	Waypoint ID	Flyover	Course °M (°T)	Magnetic Variation	Distance (NM)	Turn Direction	Altitude (ft)	Speed (kts)	VPA/TCH	Navigation Specification
EBCOL 1A											
010	CF	BV412	Y	030 (036.3)	-6.4	6.0	-	-	-	-	RNAV 1
020	TF	EBCOL	-	030 (036.3)	-6.4	14.1	-	+FL080	-	-	RNAV 1
OBCAS 1A											
010	CF	BV412	Y	030 (036.3)	-6.4	6.0	-	-	-	-	RNAV 1
020	DF	OBCAS	-	-	-6.4	-	R	+FL105	-	-	RNAV 1
LEBAT 1A											
010	CF	BV411	Y	030 (036.3)	-6.4	3.0	-	-	-	-	RNAV 1
020	DF	LEBAT	-	-	-6.4	-	L	+FL105	-220	-	RNAV 1

RNAV
STANDARD DEPARTURE CHART
INSTRUMENT (SID) - ICAO

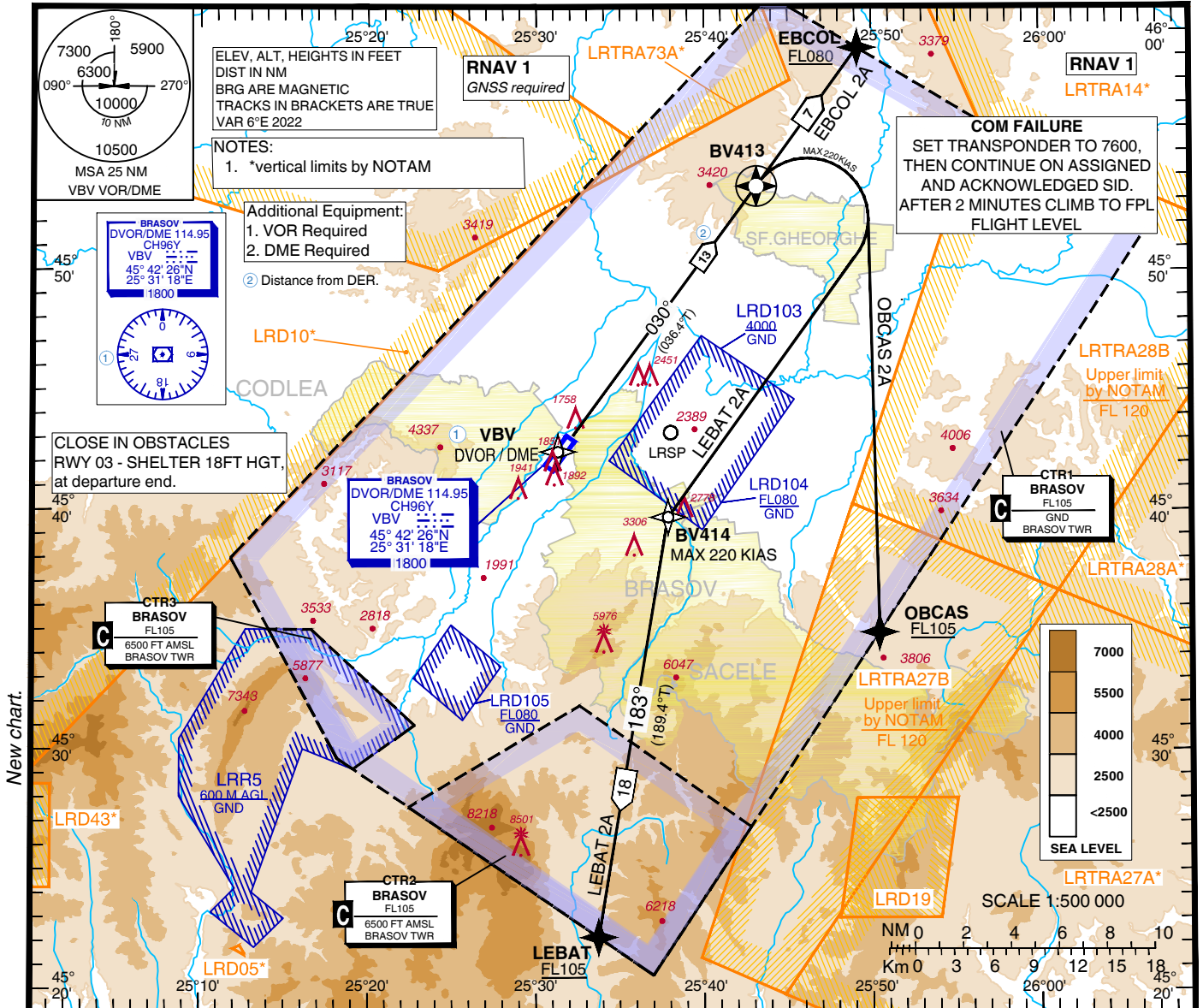
TRANSITION ALTITUDE 7000

BRAȘOV/Brașov - Ghimbav (LRBV)

BRASOV TWR 118.630
BRASOV TWR ALTN 120.135

RWY 03

EBCOL 2A, OBCAS 2A,
LEBAT 2A



DESIGNATOR DEPARTURE ROUTE	DEPARTURE ROUTE AND LEVEL INSTRUCTIONS / REMARKS
EBCOL 2A	Climb on runway track to BV413, continue on track 030° to EBCOL. Cross EBCOL at or above FL080. PDG min 5.2% due to airspace structure. If unable to comply contact ATC before departure.
OBCAS 2A	Climb on runway track to BV413, turn RIGHT direct to OBCAS. Cross OBCAS at or above FL105. PDG min 5.0% due to airspace structure. Turn limited to MAX 220 KIAS. If unable to comply contact ATC before departure.
LEBAT 2A	Climb on runway track to BV413, turn RIGHT direct to BV414, continue on track 183° to LEBAT. Cross LEBAT at or above FL105. PDG min 3.8% until FL105 due to obstacles. Turns limited to MAX 220 KIAS. If unable to comply contact ATC before departure.



BRAȘOV / Brașov - Ghimbav (LRBV)
SID 2A RWY 03

AERONAUTICAL DATA TABULATION

WAYPOINT LIST

RNAV SID 2A RWY 03	
Waypoint Identifier	Coordinates
DER	45°43'07.1" N 025°32'11.4" E
BV413	45°53'30.9" N 025°43'07.7" E
BV414	45°39'42.9" N 025°37'51.0" E
EBCOL	45°59'18.0" N 025°49'09.4" E
OBCAS	45°34'55.2" N 025°50'25.2" E
LEBAT	45°22'10.8" N 025°33'42.6" E

LRBV RNAV DEPARTURE SEQUENCE SID 2A RWY 03

Serial Number	Path Descriptor	Waypoint ID	Flyover	Course °M (°T)	Magnetic Variation	Distance (NM)	Turn Direction	Altitude (ft)	Speed (kts)	VPA/TCH	Navigation Specification
EBCOL 2A											
010	CF	BV413	Y	030 (036.4)	-6.4	12.9	-	-	-	-	RNAV 1
020	TF	EBCOL	-	030 (036.1)	-6.4	7.2	-	+FL080	-	-	RNAV 1
OBCAS 2A											
010	CF	BV413	Y	030 (036.4)	-6.4	12.9	-	-	-	-	RNAV 1
020	DF	OBCAS	-	-	-6.4	-	R	+FL105	-220	-	RNAV 1
LEBAT 2A											
010	CF	BV413	Y	030 (036.4)	-6.4	12.9	-	-	-	-	RNAV 1
020	DF	BV414	-	-	-6.4	-	R	-	-220	-	RNAV 1
030	TF	LEBAT	-	183 (189.4)	-6.4	17.8	-	+FL105	-220	-	RNAV 1

BRAȘOV/Brașov - Ghimbav (LRBV)

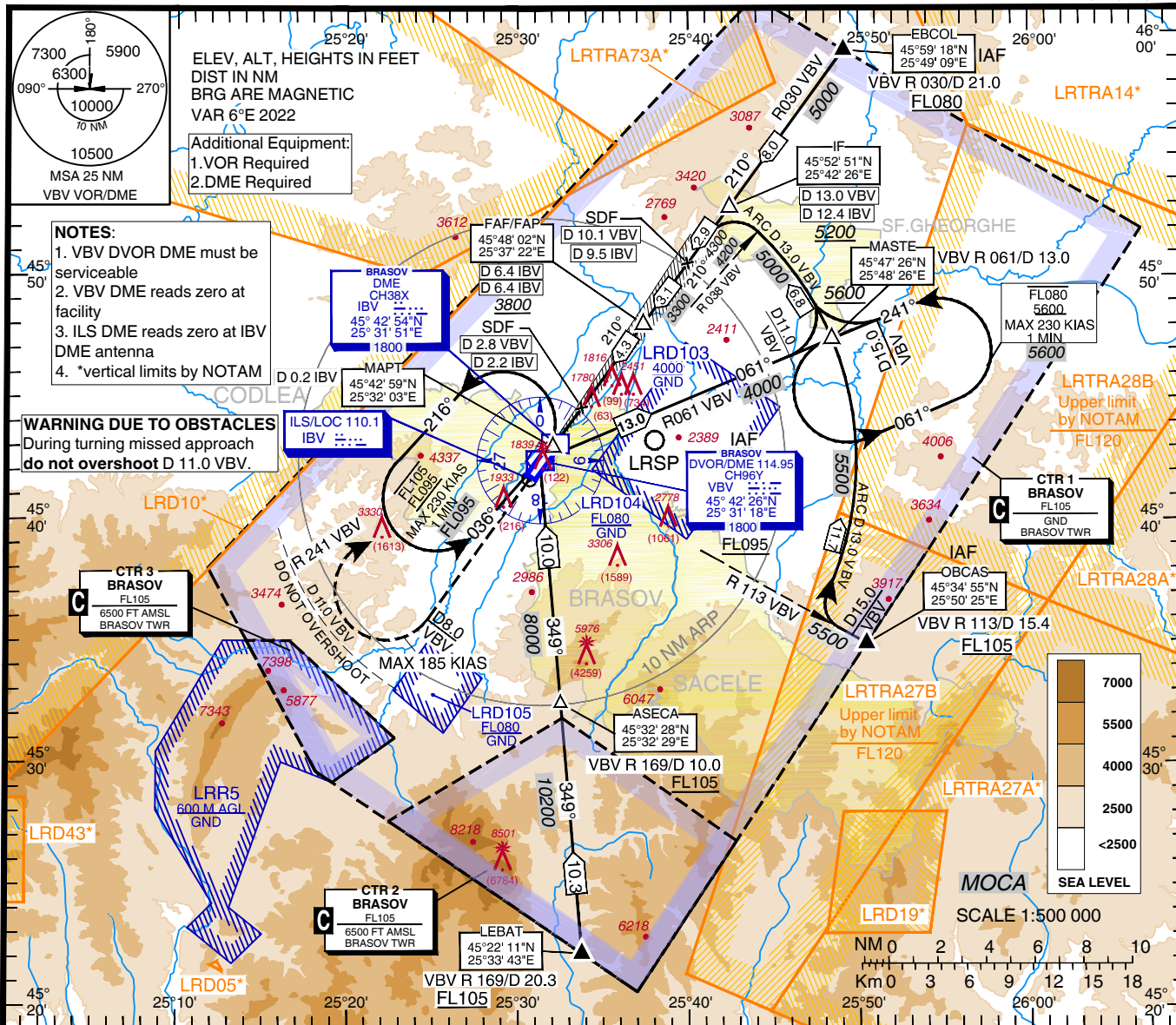
INSTRUMENT APPROACH
CHART - ICAO

AERODROME ELEV. 1764 ft

HEIGHTS RELATED TO
THR RWY 21 - ELEV 1717

BRASOV TWR 118.630
BRASOV TWR ALTN 120.135

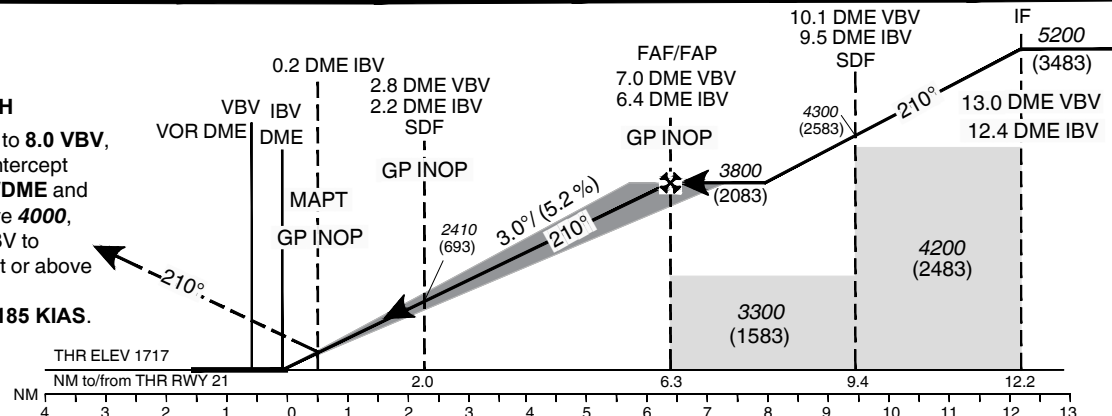
ILS
RWY 21
CAT A, B, C, D



Transition Altitude
7000

MISSED APPROACH
Climb straight ahead to **8.0 VBV**, then turn **RIGHT** to intercept **R241** to **VBV DVOR/DME** and cross VBV at or above **4000**, continue on **R061 VBV** to **MASTE** and **HOLD** at or above **6500 FT**. Turn limited to **MAX 185 KIAS**.

ILS RDH 54



OCA(H)	MACG	A	B	C	D
CAT I	2.50%	2349 (632)	2359 (642)	2368 (651)	2378 (661)
	3.00%	2072 (355)	2082 (365)	2092 (375)	2101 (384)
	4.00%	1870 (153)	1880 (163)	1890 (173)	1900(183)
GP INOP with SDF	2.50%	2510 (793)	2530 (813)	2560 (843)	2580 (863)
	3.00%	2150 (433)	2160 (443)	2190 (473)	2210 (493)
	4.00%	2150 (433)			
GP INOP w/o SDF	2.50%	2510 (793)	2530(813)	2560 (843)	2580 (863)
	3.00%				
	4.00%	2190 (473)			
Circling*		2380	2460	2740	NA

GS	kts	70	90	100	120	140	160
FAF-MAPt 6.3 NM	min:s	5:24	4:12	3:47	3:09	2:42	2:22
Rate of descent	ft/min	372	478	531	637	743	849

Distance to IBV	NM	1	2	3	4	5	6
Altitude (Height)	FT	2040 (323)	2350 (633)	2670 (953)	2990 (1273)	3310 (1593)	3630 (1913)

* Circling WEST of RWY only

**BRAȘOV / Brașov - Ghimbav (LRBV)
ILS RWY 21****AERONAUTICAL DATA TABULATION**

ILS Approach to RWY 21 from EBCOL, OBCAS, LEBAT and VBV DVOR/DME	
Fix/Point	Coordinates
LEBAT – BRG 168.99° VBV / D 20.33 VBV	45°22'10.8" N 025°33'42.6" E
ASECA – BRG 168.99° VBV / D 10.00 VBV	45°32'28.4" N 025°32'29.0" E
OBCAS (IAF) – BRG 113.14° VBV / D 15.38 VBV	45°34'55.2" N 025°50'25.2" E
EBCOL (IAF) – BRG 030.39° VBV / D 20.98 VBV	45°59'18.0" N 025°49'09.4" E
VBV DVOR/DME (IAF)	45°42'26.2" N 025°31'17.5" E
MASTE – BRG 061.26° VBV / D 13.00 VBV	45°47'26.1" N 025°48'26.0" E
IF – BRG 030.50° VBV / D 12.40 IBV / D 13.00 VBV	45°52'50.7" N 025°42'25.6" E
D 9.5 IBV (SDF) – BRG 030.60° VBV / D 9.53 IBV / D 10.13 VBV	45°50'32.1" N 025°39'59.4" E
FAP/FAF (GP INOP) – BRG 030.83° VBV / D 6.43 IBV / D 7.03 VBV	45°48'02.4" N 025°37'21.6" E
SDF (GP INOP) – BRG 032.09° VBV / D 2.16 IBV / D 2.76 VBV	45°44'36.0" N 025°33'44.7" E
THR RWY 21 (MAPt GP INOP)	45°42'59.31" N 025°32'03.23" E
IBV DME	45°42'54.2" N 025°31'50.6" E
GP 21	45°42'54.1" N 025°31'50.9" E
IBV LOC	45°41'38.2" N 025°30'38.2" E

Final approach descent angle: 3.00°

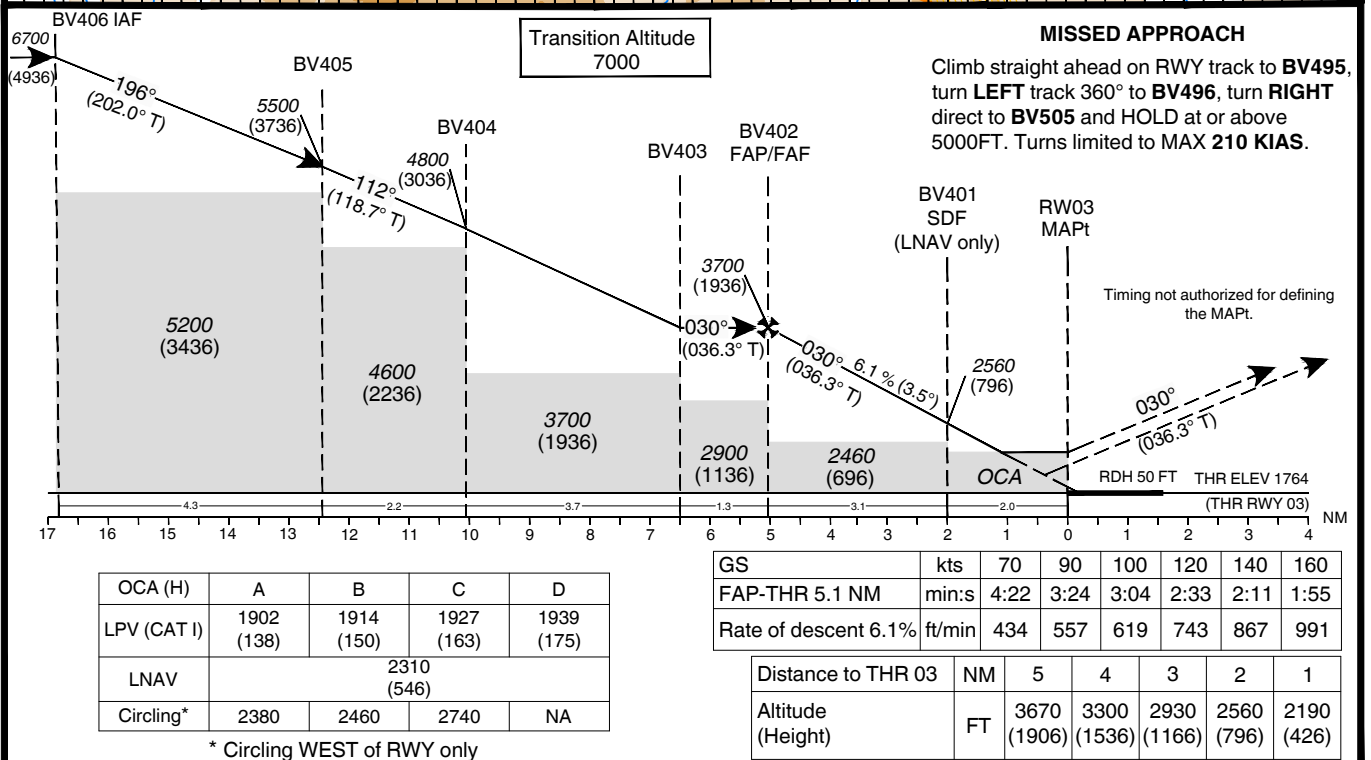
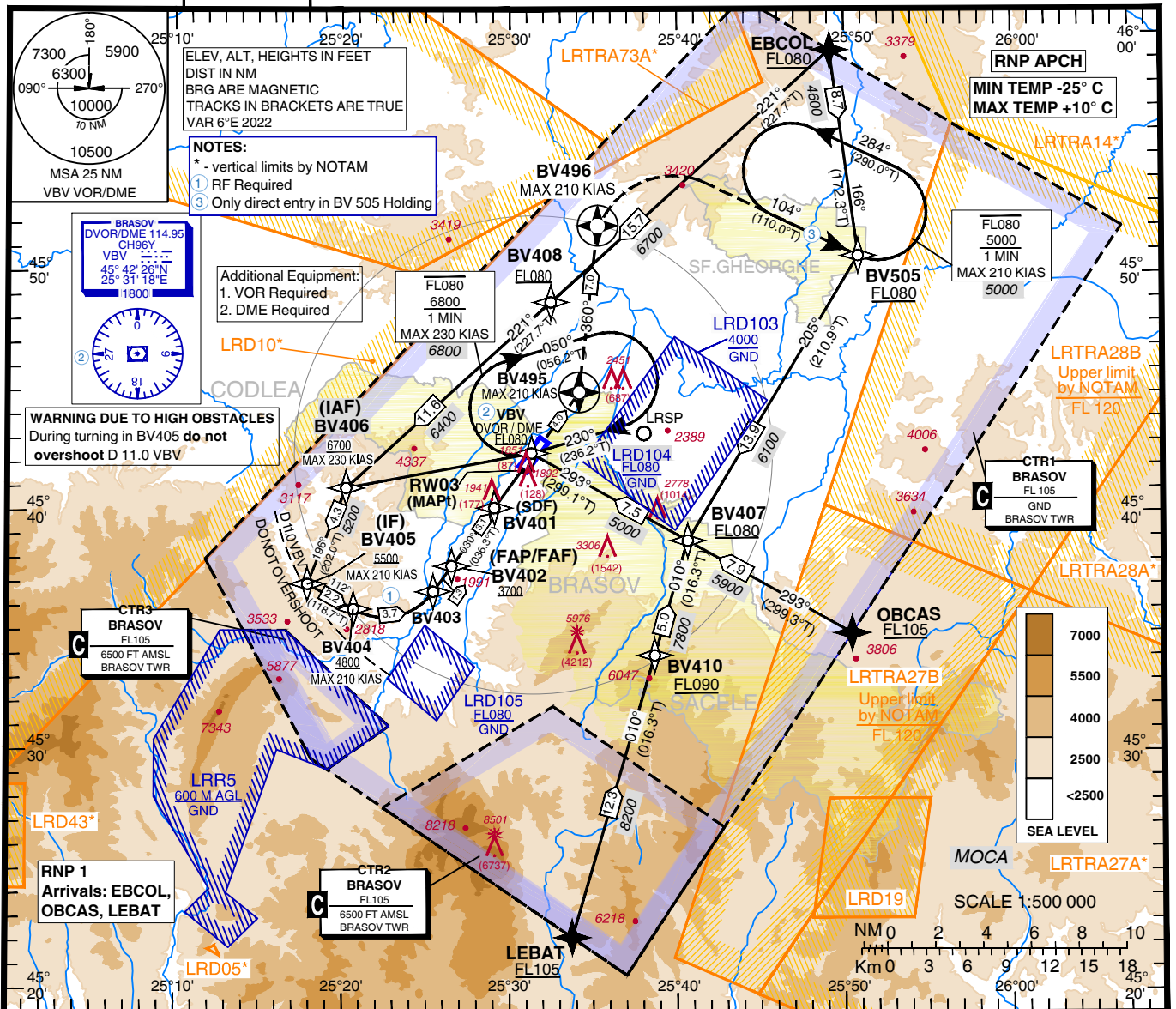
INSTRUMENT APPROACH CHART - ICAO

EGNOS CH: 83215 E03A

AERODROME ELEV. 1764 ft
HEIGHTS RELATED TO THR RWY 03 - ELEV 1764

BRASOV TWR 118.630
BRASOV TWR ALTN 120.135

BRĂȘOV/Brașov - Ghimbav (LRBV)
RNP Z RWY 03 (LPV, LNAV Only)



BRAȘOV / Brașov - Ghimbav (LRBV)
RNP Z RWY 03

AERONAUTICAL DATA TABULATION

RNP Z RWY 03	
Waypoint Identifier	Coordinates
EBCOL	45°59'18.0" N 025°49'09.4" E
OBCAS	45°34'55.2" N 025°50'25.2" E
LEBAT	45°22'10.8" N 025°33'42.6" E
BV410	45°33'58.7" N 025°38'38.9" E
BV408	45°48'45.2" N 025°32'26.6" E
BV407	45°38'47.1" N 025°40'36.7" E
VBV	45°42'26.2" N 025°31'17.5" E
BV406 (IAF)	45°40'58.6" N 025°20'13.8" E
BV405 (IF)	45°36'58.0" N 025°17'55.4" E
BV404 (SDF)	45°35'54.7" N 025°20'39.9" E
BV403	45°36'39.2" N 025°25'25.6" E
BV402 (FAF)	45°37'40.1" N 025°26'29.2" E
BV401 (SDF / LNAV Only)	45°40'08.9" N 025°29'04.8" E
RW03	45°41'45.67" N 025°30'46.05" E
BV495 (MATF)	45°44'59.1" N 025°34'09.0" E
BV496	45°51'56.5" N 025°35'15.1" E
BV505	45°50'42.0" N 025°50'49.8" E
RF Arc Centre Identifier	Coordinates
BV409	45°38'11.2" N 025°22'26.6" E



**BRAȘOV / Brașov - Ghimbav (LRBV)
RNP Z RWY 03**

Procedure Coding

Serial No	Path Descriptor	Waypoint ID	Fly Over	Course °M(°T)	Magnetic Variation	Distance (NM)	Turn Direction	Altitude (ft)	Speed (kts)	VPA/TCH (°/ft)	NAV SPEC
010	IF	EBCOL			-6.4			+FL080			RNP 1
020	TF	BV408		221 (227.7)	-6.4	15.7		+FL080			RNP 1
030	TF	BV406		221 (227.7)	-6.4	11.6		+6700	-230		RNP APCH
040	TF	BV405		196 (202.0)	-6.4	4.3	L	+5500	-210		RNP APCH
010	IF	EBCOL			-6.4			+FL080			RNP 1
020	TF	BV505		166 (172.3)	-6.4	8.7		+FL080			RNP 1
030	TF	BV407		205 (210.9)	-6.4	13.9	R	+FL080			RNP 1
040	TF	VBV		293 (299.1)	-6.4	7.5	R	+FL080			RNP 1
050	TF	BV406		253 ((259.3)	-6.4	7.9	L	+6700	-230		RNP APCH
060	TF	BV405		196 (202.0)	-6.4	4.3	L	+5500	-210		RNP APCH
010	IF	OBCAS			-6.4			+FL105			RNP 1
020	TF	BV407		293 (299.3)	-6.4	12.5		+3000			RNP 1
030	TF	VBV		293 (299.1)	-6.4	6.0		+3000			RNP 1
040	TF	BV406		253 (259.3)	-6.4			+FL60	-250		RNP APCH
050	TF	BV405		196 (202.0)	-6.4	23.8		+3000			RNP APCH
010	IF	LEBAT			-6.4			+FL105			RNP 1
020	TF	BV410		010 (016.3)	-6.4	12.3		+FL090			RNP 1
030	TF	BV407		010 (016.3)	-6.4	5.0		+FL080			RNP 1
040	TF	VBV		293 (299.1)	-6.4	7.5	L	+FL080			RNP 1
050	TF	BV406		253 (259.3)	-6.4	7.9	L	+6700	-230		RNP APCH
060	TF	BV405		196 (202.0)	-6.4	4.3	L	+5500	-210		RNP APCH
010	IF	BV405			-6.4			+5500			RNP APCH
020	TF	BV404		112 (118.7)	-6.4	2.2	L	+4800	-210		RNP APCH
030	RF CENTRE BV409 R=2.59	BV403			-6.4	3.7	L		-210		RNP APCH
040	TF	BV402		030 (036.3)	-6.4	1.3		@3700			RNP APCH
050	TF	BV401		030 (036.3)	-6.4	3.1		@2600			RNP APCH
060	TF	RW03	Y	030 (036.3)	-6.4	2.0		@1814		-3.5/50	RNP APCH
070	CF	BV495	Y	030 (036.3)	-6.4	4.0			-210		RNP APCH
080	TF	BV496	Y	360 (006.4)	-6.4	7.0	L		-210		RNP APCH
090	DF	BV505			-6.4		R	+5500	-210		RNP APCH
100	HM	BV505		104 (110.0)	-6.4		L	-FL080 +5000	-210		RNP APCH

Path Descriptor	Waypoint ID	Inbound course °M(°T)	Leg distance	Timimg (min.)/ Waypoint distance (NM)	Turn direction	Minimum altitude	Maximum altitude	Speed limit	Navigation specification
HM	VBV	230 (236.2)		1/-	R	6800	FL080	-230	RNAV 1



BRAȘOV / Brașov - Ghimbav (LRBV)
RNP Z RWY 03
LPV FAS DB

Input Data	
Parameters	Values
Operation Type	0
SBAS Provider	1 (EGNOS)
Airport Identifier	LRBV
Runway	03
Runway Letter	0 (None)
Approach Performance Designator	0
Route Indicator	Z
Reference Path Data Selector	0
Reference Path Identifier	E03A
LTP/FTP Latitude	454145.6750N
LTP/FTP Longitude	0253046.0530E
LTP/FTP Ellipsoidal Height (metres)	537.8
FPAP Latitude	454307.2800N
Delta FPAP Latitude (seconds)	81.6050
FPAP Longitude	0253211.5800E
Delta FPAP Longitude (seconds)	85.5270
Threshold Crossing Height	50.0
TCH Units Selector	0 (FEET)
Glidepath Angle (degrees)	3.50
Course Width (metres)	105.00
Length Offset (metres)	0
HAL (metres)	40.0
VAL (metres)	35.0

Output Data

Data Block	10 16 02 12 0C 03 D0 00 01 33 30 05 96 50 9C 13 4A EB F2 0A 02 29 8A 7D 02 2E 9C 02 F4 01 5E 01 64 00 C8 AF F2 F1 5F 7F
Calculated CRC Value	F2F15F7F

Required Additional Data

ICAO Code	LR
LTP/FTP Orthometric Height (metres)	576.3

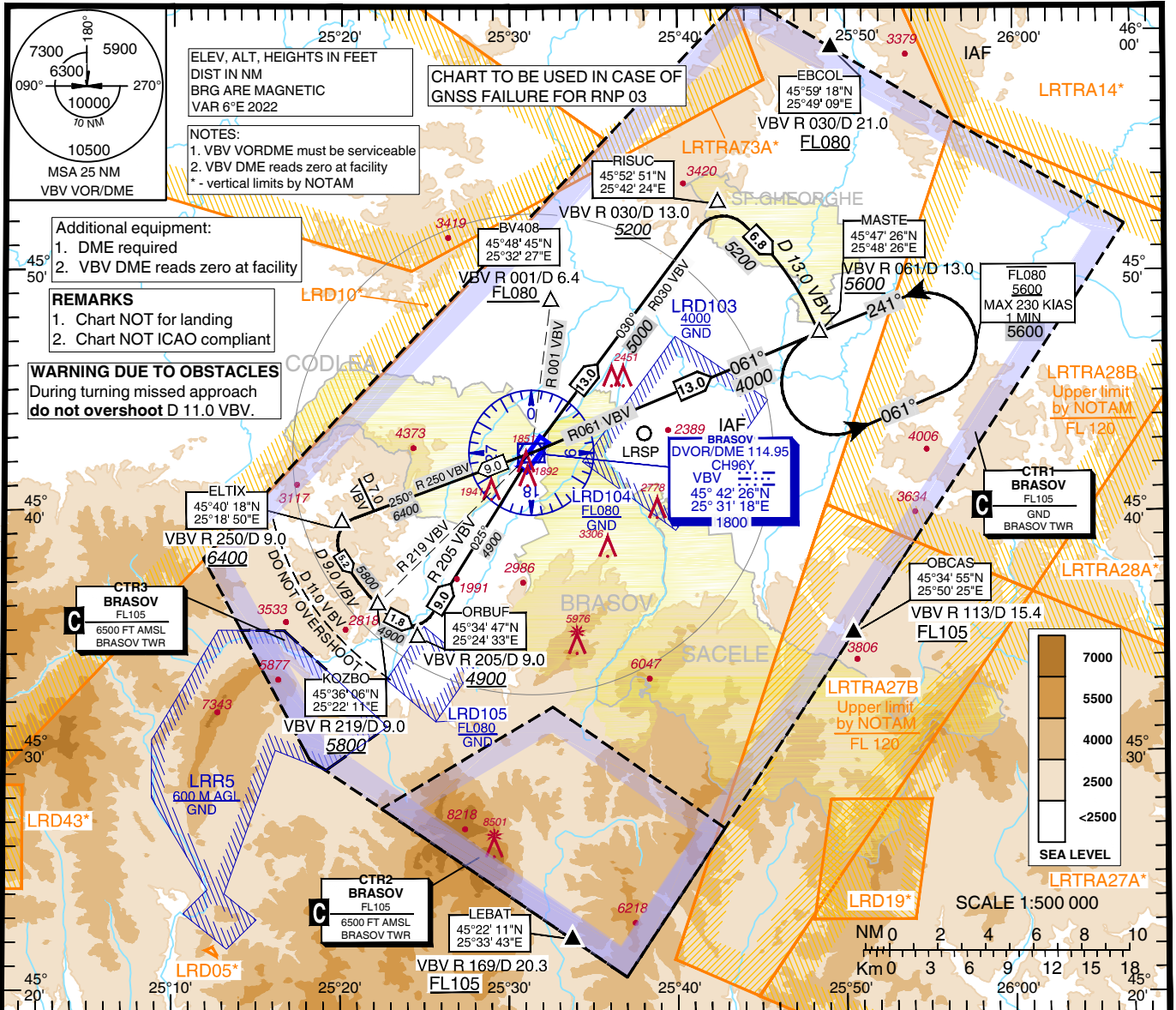
**INSTRUMENT
APPROACH CHART -
CONTINGENCY RNP 03**

AERODROME ELEV. 1764 ft

BRAȘOV/Brașov - Ghimbav (LRBV)

BRASOV TWR 118.630
BRASOV TWR ALTN 120.135

CAT A, B, C, D



SIGNAL LOSS		INSTRUCTIONS
after EBCOL	before BV408	Turn LEFT direct to VBV DVOR/DME. At VBV intercept R 250 VBV and follow trajectories to enter hold at MASTE or as instructed by ATC.
	after BV408	Turn LEFT climbing to FL080 direct to VBV DVOR/DME and, 1. If below 5000ft, follow VBV on R 030 VBV, intercept D 13.0 VBV to MASTE and hold or as instructed by ATC. 2. If above 5000ft, follow VBV on R 061 VBV to MASTE and hold or as instructed by ATC.
After OBCAS		Maintain altitude/flight level, proceed to VBV DVOR/DME, ATC instructions will be provided.
After LEBAT		Maintain altitude/flight level, proceed to VBV DVOR/DME, ATC instructions will be provided.



BRAȘOV / Brașov - Ghimbav (LRBV)
Contingency RNP RWY 03

AERONAUTICAL DATA TABULATION

WAYPOINT LIST

Contingency RNP 03 from EBCOL, OBCAS, LEBAT and VBV DVOR/DME	
Fix/Point	Coordinates
LEBAT – R 169 VBV / D 20.33 VBV	45°22'10.8" N 025°33'42.6" E
OBCAS – R 113 VBV / D 15.38 VBV	45°34'55.2" N 025°50'25.2" E
EBCOL – R 030 VBV / D 20.98 VBV	45°59'18.0" N 025°49'09.4" E
MASTE – R 061 VBV / D 13.00 VBV	45°47'26.1" N 025°48'26.0" E
RISUC – R 030 VBV / D 13.00 VBV	45°52'51.4" N 025°42'24.2" E
ORBUF – R 205 VBV / D 9.0 VBV	45°34'46.6" N 025°24'33.2" E
KOZBO – R 219 VBV / D 9.0 VBV	45°36'05.9" N 025°22'10.8" E
ELTIX – R 250 VBV / D 9.0 VBV	45°40'17.8" N 025°18'49.9" E
VBV DVOR/DME	45°42'26.2" N 025°31'17.5" E